

Datasheet for ABIN3030248
anti-CALB1 antibody (AA 2-175)

10 Images

[Go to Product page](#)

Overview

Quantity:	100 µg
Target:	CALB1
Binding Specificity:	AA 2-175
Reactivity:	Human, Rat, Mouse
Host:	Rabbit
Clonality:	Polyclonal
Conjugate:	This CALB1 antibody is un-conjugated
Application:	Western Blotting (WB), Immunohistochemistry (Paraffin-embedded Sections) (IHC (p)), Flow Cytometry (FACS)

Product Details

Immunogen:	Human partial recombinant protein (AA 2-175) was used as the immunogen for this Calbindin antibody.
Isotype:	IgG
Purification:	Antigen affinity

Target Details

Target:	CALB1
Alternative Name:	Calbindin (CALB1 Products)
Background:	Calbindin is a calcium-binding protein belonging to the troponin C superfamily. Calretinin is expressed in central and peripheral nervous system and in many normal and pathological

Target Details

tissues. The rat and human calretinin exhibit 98 % sequence homology and 91 % homology to many other species. Two calcium binding proteins, calbindin and calretinin, have been reported to be expressed in abundance in Purkinje cells and other cell types in the cerebellum.

Gene ID: 793

Application Details

Application Notes: The stated application concentrations are suggested starting points. Titration of the Calbindin antibody may be required due to differences in protocols and secondary/substrate sensitivity.\.
Western blot: 0.5-1 µg/mL,IHC (Paraffin): 0.5-1 µg/mL,FACS: 1-3 µg/10⁶ cells

Restrictions: For Research Use only

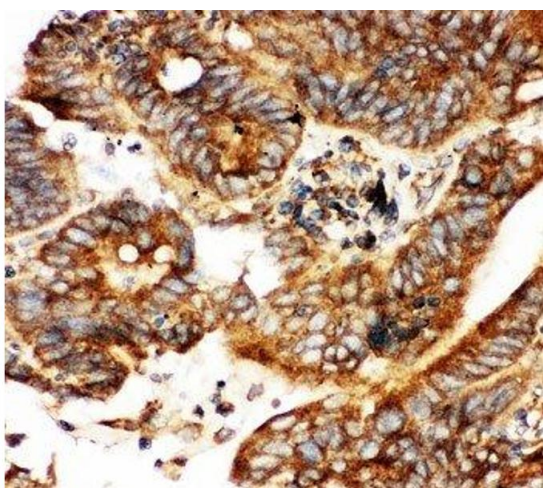
Handling

Buffer: 0.5 mg/mL if reconstituted with 0.2 mL sterile DI water

Storage: -20 °C

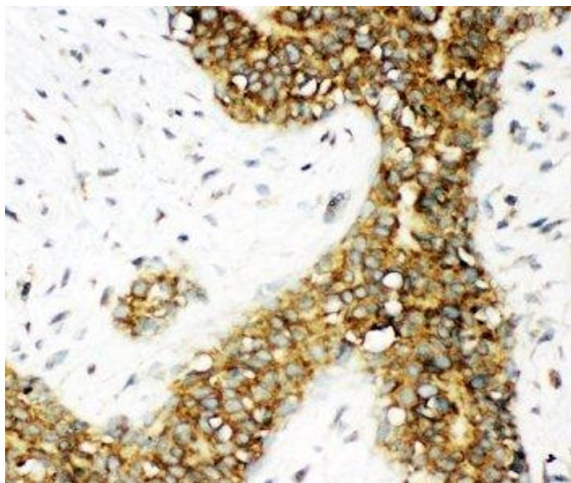
Storage Comment: After reconstitution, the Calbindin antibody can be stored for up to one month at 4°C. For long-term, aliquot and store at -20°C. Avoid repeated freezing and thawing.

Images



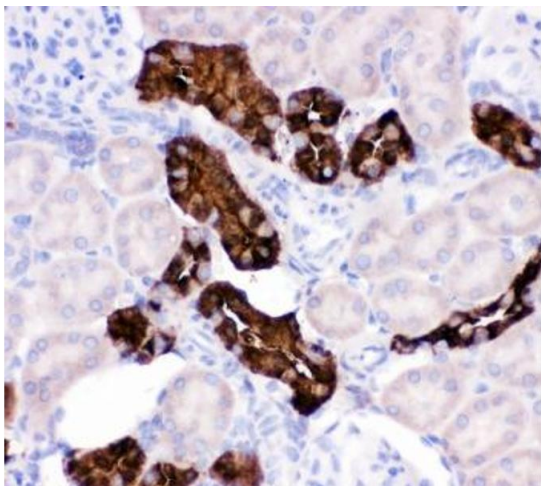
Immunohistochemistry

Image 1. IHC-P testing of human intestinal cancer tissue



Immunohistochemistry

Image 2. IHC-P: Calbindin antibody testing of human breast cancer tissue



Immunohistochemistry

Image 3. IHC-P testing of rat kidney tissue

Please check the [product details page](#) for more images. Overall 10 images are available for ABIN3030248.