



[Go to Product page](#)

Datasheet for ABIN3030258

anti-CAMKII gamma antibody (AA 309-338)

5 Images

Overview

Quantity:	0.4 mL
Target:	CAMKII gamma (CAMK2G)
Binding Specificity:	AA 309-338
Reactivity:	Human, Rat, Mouse, Primate
Host:	Rabbit
Clonality:	Polyclonal
Conjugate:	This CAMKII gamma antibody is un-conjugated
Application:	Western Blotting (WB), Immunohistochemistry (IHC), ELISA

Product Details

Immunogen:	A portion of amino acids 309-338 from the human protein was used as the immunogen for this CAMK2G antibody.
Isotype:	Ig Fraction
Purification:	Purified

Target Details

Target:	CAMKII gamma (CAMK2G)
Alternative Name:	CAMK2G (CAMK2G Products)
Background:	CaM-kinase II (CAMK2) is a prominent Ser/Thr protein kinase in the central nervous system that may function in long-term potentiation and neurotransmitter release. Likely autophosphorylation of Thr-286 allows the kinase to switch from a calmodulin-dependent to a

Target Details

calmodulin-independent state. CAMK2 is composed of four different chains: alpha, beta, gamma, and delta. The different isoforms assemble into homo- or heteromultimeric holoenzymes composed of 8 to 12 subunits.

UniProt: [Q13555](#)

Pathways: [WNT Signaling](#), [Interferon-gamma Pathway](#), [Hormone Transport](#), [Myometrial Relaxation and Contraction](#), [Regulation of long-term Neuronal Synaptic Plasticity](#)

Application Details

Application Notes: Titration of the CAMK2G antibody may be required due to differences in protocols and secondary/substrate sensitivity.\. Western blot: 1:1000,IHC (Paraffin): 1:50-1:100

Restrictions: For Research Use only

Handling

Format: Liquid

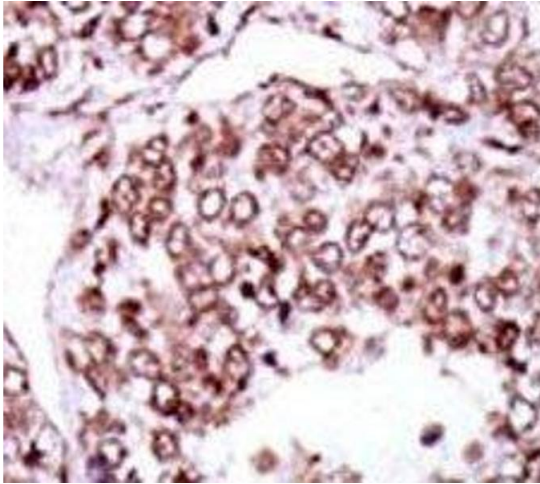
Buffer: In 1X PBS pH 7.4 with 0.09 % sodium azide

Preservative: Sodium azide

Precaution of Use: This product contains Sodium azide: a POISONOUS AND HAZARDOUS SUBSTANCE which should be handled by trained staff only.

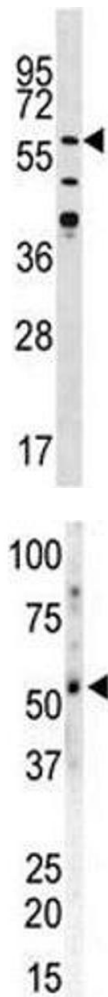
Storage: -20 °C

Storage Comment: Aliquot the CAMK2G antibody and store frozen at -20°C or colder. Avoid repeated freeze-thaw cycles.



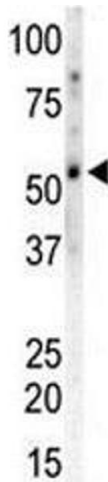
Immunohistochemistry

Image 1. IHC analysis of FFPE human hepatocarcinoma stained with the CAMK2G antibody



Western Blotting

Image 2. Western blot analysis of CAMK2G antibody in Jurkat lysate



Western Blotting

Image 3. Western blot of CAMK2G and mouse heart tissue lysate

Please check the [product details page](#) for more images. Overall 5 images are available for ABIN3030258.