

Datasheet for ABIN3030265

**anti-Calmodulin 1 antibody (AA 117-149)**[Go to Product page](#)**3** Images

## Overview

Quantity:	0.4 mL
Target:	Calmodulin 1 (Calm1)
Binding Specificity:	AA 117-149
Reactivity:	Human
Host:	Rabbit
Clonality:	Polyclonal
Conjugate:	This Calmodulin 1 antibody is un-conjugated
Application:	Western Blotting (WB), ELISA, Immunohistochemistry (IHC)

## Product Details

Immunogen:	A portion of amino acids 117-149 from the human protein was used as the immunogen for this Calmodulin antibody.
Isotype:	Ig Fraction
Cross-Reactivity (Details):	Expected species reactivity: Mouse, Rat, Bovine, Chicken, Zebrafish, Rabbit, Xenopus
Purification:	Purified

## Target Details

Target:	Calmodulin 1 (Calm1)
Alternative Name:	Calmodulin ( <a href="#">Calm1 Products</a> )
Background:	Calmodulin is the archetype of the family of calcium-modulated proteins of which nearly 20

## Target Details

members have been found. They are identified by their occurrence in the cytosol or on membranes facing the cytosol and by a high affinity for calcium. Calmodulin contains 149 amino acids and has 4 calcium-binding domains. Its functions include roles in growth and the cell cycle as well as in signal transduction and the synthesis and release of neurotransmitters.

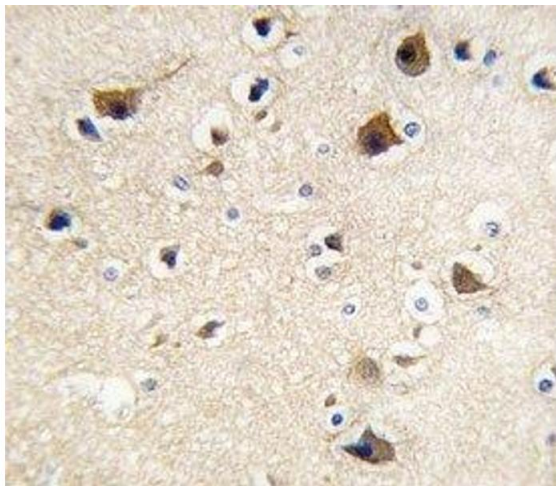
UniProt:	<a href="#">P62158</a>
Pathways:	<a href="#">cAMP Metabolic Process</a> , <a href="#">Myometrial Relaxation and Contraction</a> , <a href="#">G-protein mediated Events</a> , <a href="#">Interaction of EGFR with phospholipase C-gamma</a> , <a href="#">Phototransduction</a> , <a href="#">BCR Signaling</a>

## Application Details

Application Notes:	Titration of the Calmodulin antibody may be required due to differences in protocols and secondary/substrate sensitivity.\. Western blot: 1:1000,IHC (Paraffin): 1:10-1:50
Restrictions:	For Research Use only

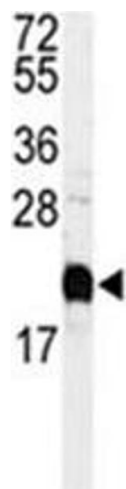
## Handling

Format:	Liquid
Buffer:	In 1X PBS pH 7.4 with 0.09 % sodium azide
Preservative:	Sodium azide
Precaution of Use:	This product contains Sodium azide: a POISONOUS AND HAZARDOUS SUBSTANCE which should be handled by trained staff only.
Storage:	-20 °C
Storage Comment:	Aliquot the Calmodulin antibody and store frozen at -20°C or colder. Avoid repeated freeze-thaw cycles.



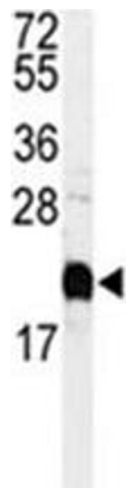
### Immunohistochemistry

**Image 1.** IHC analysis of FFPE human brain tissue stained with Calmodulin antibody



### Western Blotting

**Image 2.** Western blot analysis of Calmodulin antibody and HeLa lysate.



### Western Blotting

**Image 3.** Western blot analysis of Calmodulin antibody and HeLa lysate.