

Datasheet for ABIN3030270
anti-CREB1 antibody (AA 105-132)



[Go to Product page](#)

5 Images

Overview

Quantity:	0.4 mL
Target:	CREB1
Binding Specificity:	AA 105-132
Reactivity:	Human
Host:	Rabbit
Clonality:	Polyclonal
Conjugate:	This CREB1 antibody is un-conjugated
Application:	Western Blotting (WB), ELISA, Immunofluorescence (IF), Flow Cytometry (FACS)

Product Details

Immunogen:	A portion of amino acids 105-132 from the human protein was used as the immunogen for this CREB antibody.
Isotype:	Ig Fraction
Cross-Reactivity (Details):	Expected species reactivity: Mouse, Rat, Bovine
Purification:	Antigen affinity purified

Target Details

Target:	CREB1
Alternative Name:	CREB (CREB1 Products)
Background:	This gene encodes a transcription factor that is a member of the leucine zipper family of DNA

Target Details

binding proteins. This protein binds as a homodimer to the cAMP-responsive element, an octameric palindrome. The protein is phosphorylated by several protein kinases, and induces transcription of genes in response to hormonal stimulation of the cAMP pathway. Alternate splicing of this gene results in two transcript variants encoding different isoforms.

UniProt: [P16220](#)

Pathways: [TLR Signaling](#), [Fc-epsilon Receptor Signaling Pathway](#), [EGFR Signaling Pathway](#), [Neurotrophin Signaling Pathway](#), [Thyroid Hormone Synthesis](#), [Activation of Innate immune Response](#), [Myometrial Relaxation and Contraction](#), [Regulation of Cell Size](#), [Toll-Like Receptors Cascades](#), [G-protein mediated Events](#), [Interaction of EGFR with phospholipase C-gamma](#), [Positive Regulation of fat Cell Differentiation](#)

Application Details

Application Notes: Titration of the CREB antibody may be required due to differences in protocols and secondary/substrate sensitivity.\. Immunofluorescence: 1:10-1:50,Western blot: 1:1000,Flow Cytometry: 1:10-1:50

Restrictions: For Research Use only

Handling

Format: Liquid

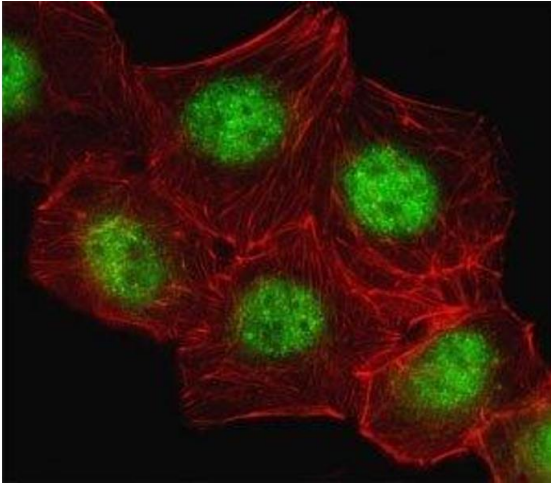
Buffer: In 1X PBS, pH 7.4, with 0.09 % sodium azide

Preservative: Sodium azide

Precaution of Use: This product contains Sodium azide: a POISONOUS AND HAZARDOUS SUBSTANCE which should be handled by trained staff only.

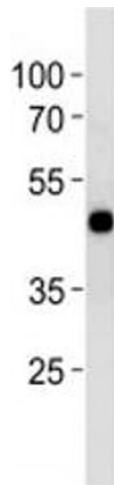
Storage: -20 °C

Storage Comment: Aliquot the CREB antibody and store frozen at -20°C or colder. Avoid repeated freeze-thaw cycles.



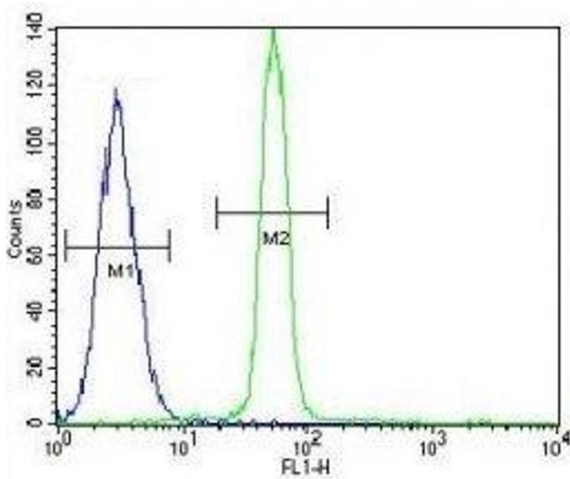
Immunofluorescence

Image 1. Fluorescent image of A549 cell stained with CREB antibody. Alexa Fluor 488 (green) secondary was used (1:400, 50 min at 37°C). Cytoplasmic actin was counterstained with Alexa Fluor 555 (red) conjugated Phalloidin. Immunoreactivity is localized to the nuclei



Western Blotting

Image 2. CREB antibody western blot analysis in HT29 lysate



Flow Cytometry

Image 3. CREB antibody flow cytometric analysis of A549 cells (green) compared to a negative control (blue). FITC-conjugated goat-anti-rabbit secondary Ab was used for the analysis.

Please check the [product details page](#) for more images. Overall 5 images are available for ABIN3030270.