

Datasheet for ABIN3030281  
**anti-CPT1A antibody (AA 606-636)**

## 3 Images

[Go to Product page](#)

## Overview

Quantity:	0.4 mL
Target:	CPT1A
Binding Specificity:	AA 606-636
Reactivity:	Human, Cow
Host:	Rabbit
Clonality:	Polyclonal
Conjugate:	This CPT1A antibody is un-conjugated
Application:	Western Blotting (WB), ELISA, Immunohistochemistry (IHC)

## Product Details

Immunogen:	A portion of amino acids 606-636 from the human protein was used as the immunogen for this CPT1A antibody.
Isotype:	Ig Fraction
Purification:	Purified

## Target Details

Target:	CPT1A
Alternative Name:	CPT1A ( <a href="#">CPT1A Products</a> )
Background:	The mitochondrial oxidation of long-chain fatty acids is initiated by the sequential action of carnitine palmitoyltransferase I (which is located in the outer membrane and is detergent-labile) and carnitine palmitoyltransferase II (which is located in the inner membrane and is detergent-

## Target Details

stable), together with a carnitine-acylcarnitine translocase. CPT I is the key enzyme in the carnitine-dependent transport across the mitochondrial inner membrane and its deficiency results in a decreased rate of fatty acid beta-oxidation.

UniProt: [P50416](#)

Pathways: [AMPK Signaling](#), [Regulation of Lipid Metabolism by PPARalpha](#), [Feeding Behaviour](#), [Monocarboxylic Acid Catabolic Process](#)

## Application Details

Application Notes: Titration of the CPT1A antibody may be required due to differences in protocols and secondary/substrate sensitivity.\. Western blot: 1:1000,IHC (Paraffin): 1:50-1:100

Restrictions: For Research Use only

## Handling

Format: Liquid

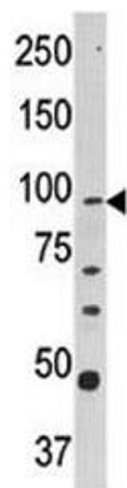
Buffer: In 1X PBS, pH 7.4, with 0.09 % sodium azide

Preservative: Sodium azide

Precaution of Use: This product contains Sodium azide: a POISONOUS AND HAZARDOUS SUBSTANCE which should be handled by trained staff only.

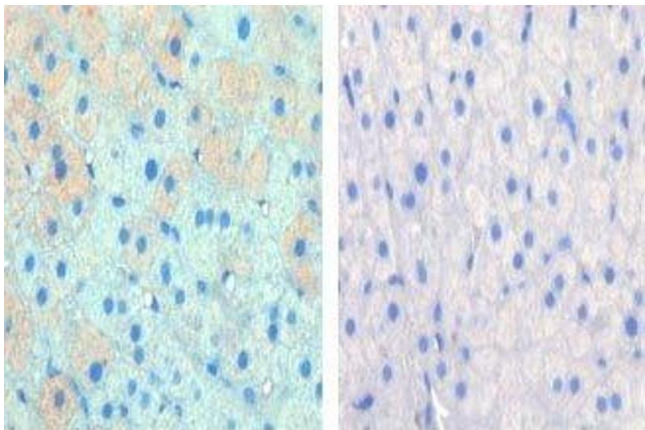
Storage: -20 °C

Storage Comment: Aliquot the CPT1A antibody and store frozen at -20°C or colder. Avoid repeated freeze-thaw cycles.



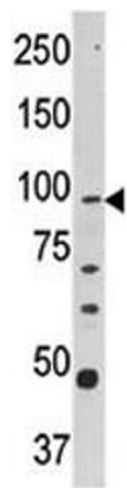
#### Western Blotting

**Image 1.** Western blot analysis of CPT1A antibody and Y79 lysate



#### Immunohistochemistry

**Image 2.** IHC data of FFPE cow lactation tissue tested with CPT1A antibody (left) and without primary Ab (right). This data was kindly offered by Hideaki Hayashi, University of Bern, Switzerland.



#### Western Blotting

**Image 3.** Western blot analysis of CPT1A antibody and Y79 lysate