

Datasheet for ABIN3030283
anti-CPT1C antibody (AA 752-782)

3 Images

[Go to Product page](#)

Overview

Quantity:	0.4 mL
Target:	CPT1C
Binding Specificity:	AA 752-782
Reactivity:	Human
Host:	Rabbit
Clonality:	Polyclonal
Conjugate:	This CPT1C antibody is un-conjugated
Application:	Western Blotting (WB), ELISA, Flow Cytometry (FACS)

Product Details

Immunogen:	A portion of amino acids 752-782 from the human protein was used as the immunogen for this CPT1C antibody.
Isotype:	Ig Fraction
Purification:	Antigen affinity purified

Target Details

Target:	CPT1C
Alternative Name:	CPT1C (CPT1C Products)
Background:	The Cpt1 family of proteins are outer mitochondrial membrane proteins that regulate the entry into, and oxidation of fatty acids by, mitochondria. Malonyl-CoA, an intermediate in fatty acid synthesis, has been implicated as a regulatory component of the energy sensing system that

Target Details

feeds into hypothalamic neurons to impart energy homeostasis. Malonyl-CoA levels in the hypothalamus are dynamically regulated by fasting and feeding, altering subsequent feeding behaviour. Cpt1c, the brain-specific carnitine O-palmitoyltransferase 1, is thought to relay information about malonyl-CoA levels in hypothalamic neurons that express orexigenic and anorexigenic neuropeptides that regulate food intake and peripheral energy expenditure. Unlike other Cpt1 proteins, Cpt1c binds Malonyl-CoA but does not catalyse the transfer of the malonyl group from CoA to carnitine.

UniProt: [Q8TCG5](#)

Pathways: [AMPK Signaling](#), [Monocarboxylic Acid Catabolic Process](#)

Application Details

Application Notes: Titration of the CPT1C antibody may be required due to differences in protocols and secondary/substrate sensitivity.\. Western blot: 1:1000,Flow Cytometry: 1:10-1:50

Restrictions: For Research Use only

Handling

Format: Liquid

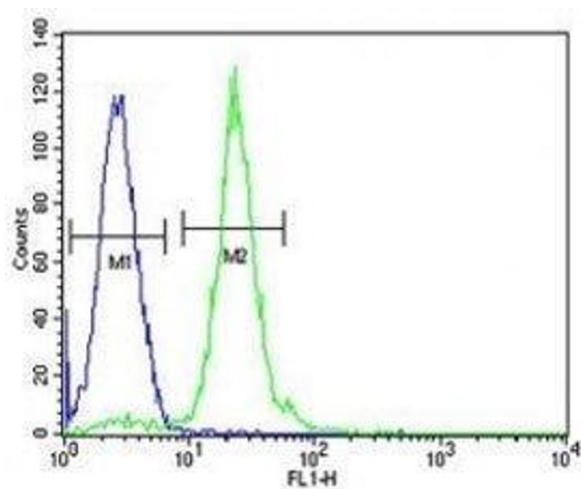
Buffer: In 1X PBS, pH 7.4, with 0.09 % sodium azide

Preservative: Sodium azide

Precaution of Use: This product contains Sodium azide: a POISONOUS AND HAZARDOUS SUBSTANCE which should be handled by trained staff only.

Storage: -20 °C

Storage Comment: Aliquot the CPT1C antibody and store frozen at -20°C or colder. Avoid repeated freeze-thaw cycles.



Flow Cytometry

Image 1. CPT1C antibody flow cytometric analysis of HL-60 cells (green) compared to a negative control (blue). FITC-conjugated goat-anti-rabbit secondary Ab was used for the analysis.



Western Blotting

Image 2. CPT1C antibody western blot analysis in HL-60 lysate. Predicted molecular weight 81-91 kDa.



Western Blotting

Image 3. CPT1C antibody western blot analysis in HL-60 lysate. Predicted molecular weight 81-91 kDa.