



[Go to Product page](#)

Datasheet for ABIN3030329

anti-beta Catenin antibody (AA 764-781)

5 Images

Overview

Quantity:	100 µg
Target:	beta Catenin (CATNB)
Binding Specificity:	AA 764-781
Reactivity:	Human, Mouse, Rat
Host:	Rabbit
Clonality:	Polyclonal
Conjugate:	This beta Catenin antibody is un-conjugated
Application:	Western Blotting (WB), Immunohistochemistry (Paraffin-embedded Sections) (IHC (p)), Immunocytochemistry (ICC), Immunohistochemistry (Frozen Sections) (IHC (fro))

Product Details

Immunogen:	Amino acids 764-781 (DGLPPGDSNQLAWFDTDL) were used as the immunogen for this beta Catenin antibody (100% homologous in human, mouse and rat).
Isotype:	IgG
Purification:	Antigen affinity

Target Details

Target:	beta Catenin (CATNB)
Alternative Name:	beta Catenin (CATNB Products)
Background:	Catenins are proteins found in complexes with cadherin cell adhesion molecules of animal cells. Beta-catenin binds the cytoplasmic domain of some cadherins. It is an adherens junction

Target Details

protein that plays an important role in various aspects of liver biology.

UniProt: [P35222](#)

Pathways: [Peptide Hormone Metabolism](#)

Application Details

Application Notes: Titration of the beta Catenin antibody may be required due to differences in protocols and secondary/substrate sensitivity. Western blot: 0.5-1 µg/mL, IHC (Paraffin): 0.5-1 µg/mL, IHC (Frozen): 0.5-1 µg/mL, Immunocytochemistry: 0.5-1 µg/mL

Restrictions: For Research Use only

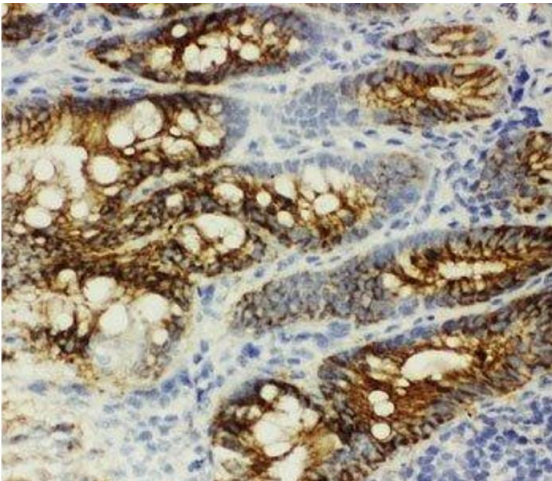
Handling

Buffer: 0.5 mg/mL if reconstituted with 0.2 mL sterile DI water

Storage: -20 °C

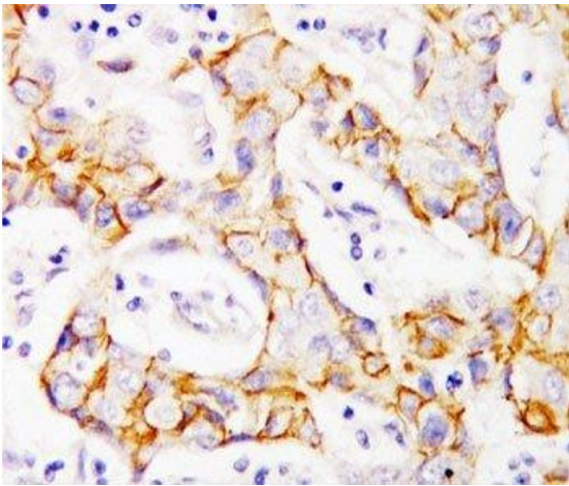
Storage Comment: After reconstitution, the pAb can be stored for up to one month at 4°C. For long-term, aliquot and store at -20°C. Avoid repeated freezing and thawing.

Images



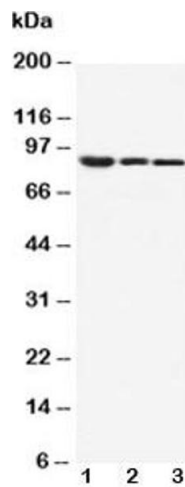
Immunohistochemistry

Image 1. IHC-F: beta Catenin antibody testing of rat intestine tissue



Immunohistochemistry

Image 2. IHC-P: beta Catenin antibody testing of human breast cancer tissue



Western Blotting

Image 3. Western blot testing of beta Catenin antibody and
Lane 1: MM453; 2: MCF-7; 3: HeLa cell lysate

Please check the [product details page](#) for more images. Overall 5 images are available for ABIN3030329.