

Datasheet for ABIN3030334

**anti-Cathepsin G antibody (AA 76-255)**[Go to Product page](#)**2** Images

## Overview

Quantity:	100 µg
Target:	Cathepsin G (CTSG)
Binding Specificity:	AA 76-255
Reactivity:	Human, Rat
Host:	Rabbit
Clonality:	Polyclonal
Conjugate:	This Cathepsin G antibody is un-conjugated
Application:	Western Blotting (WB)

## Product Details

Immunogen:	Human partial recombinant protein (AA 76-255) was used as the immunogen for this Cathepsin G antibody.
Isotype:	IgG
Purification:	Antigen affinity

## Target Details

Target:	Cathepsin G (CTSG)
Alternative Name:	Cathepsin G ( <a href="#">CTSG Products</a> )
Background:	Cathepsin G is an enzymatic protein belonging to the peptidase or protease families. In humans, it is coded by the CTSG gene. The human Cathepsin G gene was expressed in early myeloid precursors in a manner coordinate with the expression of the endogenous murine gene

## Target Details

in the bone marrow and spleen. The protein encoded by this gene, a member of the peptidase S1 protein family, is found in azurophil granules of neutrophilic polymorphonuclear leukocytes. The encoded protease has a specificity similar to that of chymotrypsin C, and may participate in the killing and digestion of engulfed pathogens, and in connective tissue remodeling at sites of inflammation.

Gene ID:	1511
Pathways:	<a href="#">ACE Inhibitor Pathway</a> , <a href="#">Peptide Hormone Metabolism</a> , <a href="#">Regulation of Systemic Arterial Blood Pressure by Hormones</a>

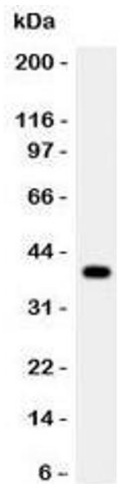
## Application Details

Application Notes:	The stated application concentrations are suggested starting amounts. Titration of the Cathepsin G antibody may be required due to differences in protocols and secondary/substrate sensitivity.\. Western blot: 0.5-1 µg/mL
Restrictions:	For Research Use only

## Handling

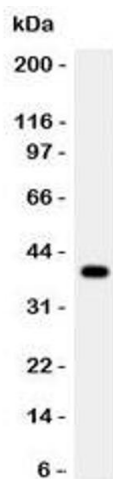
Buffer:	0.5 mg/mL if reconstituted with 0.2 mL sterile DI water
Storage:	-20 °C
Storage Comment:	After reconstitution, the Cathepsin G antibody can be stored for up to one month at 4°C. For long-term, aliquot and store at -20°C. Avoid repeated freezing and thawing.

## Images



**Western Blotting**

**Image 1.** Western blot testing of Cathepsin G antibody and rat thymus lysate



Western Blotting

**Image 2.** Western blot testing of Cathepsin G antibody and rat thymus lysate. Predicted molecular weight ~29 kDa, can be observed at ~36 kDa.