



[Go to Product page](#)

Datasheet for ABIN3030336
anti-CDX2 antibody (AA 1-30)

5 Images

Overview

Quantity:	0.4 mL
Target:	CDX2
Binding Specificity:	AA 1-30
Reactivity:	Human
Host:	Rabbit
Clonality:	Polyclonal
Conjugate:	This CDX2 antibody is un-conjugated
Application:	Western Blotting (WB), ELISA, Immunohistochemistry (IHC)

Product Details

Immunogen:	A portion of amino acids 1-30 from the human protein was used as the immunogen for this CDX2 antibody.
Isotype:	Ig Fraction
Cross-Reactivity (Details):	Expected species reactivity: Mouse
Purification:	Purified

Target Details

Target:	CDX2
Alternative Name:	CDX2 (CDX2 Products)
Background:	The caudal type homeo box transcription factors 1 (CDX1) and 2 (CDX2) are candidates for

Target Details

directing intestinal development, differentiation, and maintenance of the intestinal phenotype. CDX1 and CDX2 expression is widely present in the human intestinal and colonic mucosae, but not in the gastric mucosa, suggesting a possible role in the terminal differentiation of the intestine. Increased CDX2 expression is associated with chronic atrophic gastritis. Detectable expression of CDX2 precedes expression of CDX1 during the progression of intestinal metaplasia, thus expression of CDX2 may trigger the initiation and development of intestinal metaplasia. Markedly reduced or absent CDX2 expression was noted by immunohistochemistry in 13 of 15 (87 %) large cell minimally differentiated carcinomas (LCMDCs), whereas only 1 of the 25 (4 %) differentiated adenocarcinomas (DACs) showed reduced CDX2 expression. Thus, a significant decrease in human CDX1 and/or CDX2 expression may be associated with colorectal tumorigenesis.

UniProt: [Q99626](#)

Pathways: [Peptide Hormone Metabolism](#), [Stem Cell Maintenance](#)

Application Details

Application Notes: Titration of the CDX2 antibody may be required due to differences in protocols and secondary/substrate sensitivity.\. Western blot: 1:1000,IHC (Paraffin): 1:50-1:100

Restrictions: For Research Use only

Handling

Format: Liquid

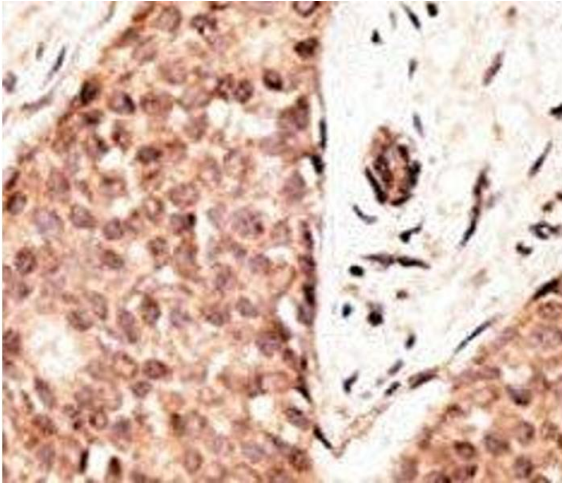
Buffer: In 1X PBS, pH 7.4, with 0.09 % sodium azide

Preservative: Sodium azide

Precaution of Use: This product contains Sodium azide: a POISONOUS AND HAZARDOUS SUBSTANCE which should be handled by trained staff only.

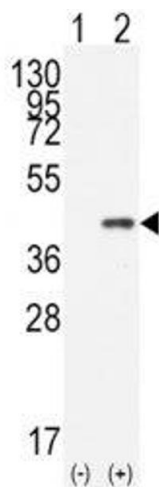
Storage: -20 °C

Storage Comment: Aliquot the CDX2 antibody and store frozen at -20°C or colder. Avoid repeated freeze-thaw cycles.



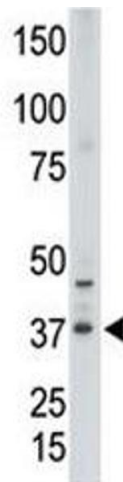
Immunohistochemistry

Image 1. IHC analysis of FFPE human breast carcinoma tissue stained with the CDX2 antibody



Western Blotting

Image 2. Western blot analysis of CDX2 antibody and 293 cell lysate (2 ug/lane) either nontransfected (Lane 1) or transiently transfected with the human gene (2).



Western Blotting

Image 3. Western blot testing of CDX2 antibody and human placenta tissue lysate. Predicted molecular weight: 33-40 kDa.

Please check the [product details page](#) for more images. Overall 5 images are available for ABIN3030336.