

Datasheet for ABIN3030338
anti-Caveolin-1 antibody (AA 4-178)[Go to Product page](#)

7 Images

Overview

Quantity:	100 µg
Target:	Caveolin-1 (CAV1)
Binding Specificity:	AA 4-178
Reactivity:	Human, Mouse
Host:	Rabbit
Clonality:	Polyclonal
Conjugate:	This Caveolin-1 antibody is un-conjugated
Application:	Western Blotting (WB), Immunofluorescence (IF), Immunohistochemistry (Paraffin-embedded Sections) (IHC (p)), Immunocytochemistry (ICC), Immunohistochemistry (Frozen Sections) (IHC (fro))

Product Details

Immunogen:	Human partial recombinant protein (AA 4-178) was used as the immunogen for this Caveolin-1 antibody.
Isotype:	IgG
Purification:	Antigen affinity

Target Details

Target:	Caveolin-1 (CAV1)
Alternative Name:	Caveolin-1 (CAV1 Products)
Background:	Caveolin-1 is a protein that in humans is encoded by the CAV1 gene. The CAV1 gene is mapped

Target Details

to 7q31.2. The scaffolding protein encoded by this gene is the main component of the caveolae plasma membranes found in most cell types. The protein links integrin subunits to the tyrosine kinase FYN, an initiating step in coupling integrins to the Ras-ERK pathway and promoting cell cycle progression. The gene is a tumor suppressor gene candidate and a negative regulator of the Ras-p42/44 MAP kinase cascade. CAV1 and CAV2 are located next to each other on chromosome 7 and express colocalizing proteins that form a stable hetero-oligomeric complex. By using alternative initiation codons in the same reading frame, two isoforms(alpha and beta) are encoded by a single transcript from this gene.

Gene ID: 857

Pathways: [Maintenance of Protein Location](#), [Signaling Events mediated by VEGFR1 and VEGFR2](#), [Negative Regulation of Transporter Activity](#), [VEGFR1 Specific Signals](#)

Application Details

Application Notes: The stated application concentrations are suggested starting points. Titration of the Caveolin-1 antibody may be required due to differences in protocols and secondary/substrate sensitivity.\. Western blot: 0.5-1 µg/mL,IHC (Paraffin): 0.5-1 µg/mL,IHC (Frozen): 0.5-1 µg/mL,ICC (FFPE): 0.5-1 µg/mL,IF (FFPE): 1-2 µg/mL

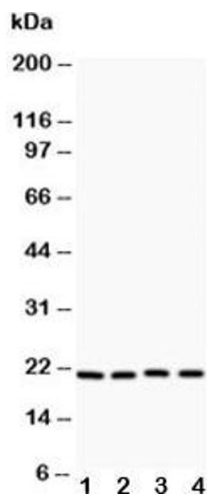
Restrictions: For Research Use only

Handling

Buffer: 0.5 mg/mL if reconstituted with 0.2 mL sterile DI water

Storage: -20 °C

Storage Comment: After reconstitution, the Caveolin-1 antibody can be stored for up to one month at 4°C. For long-term, aliquot and store at -20°C. Avoid repeated freezing and thawing.



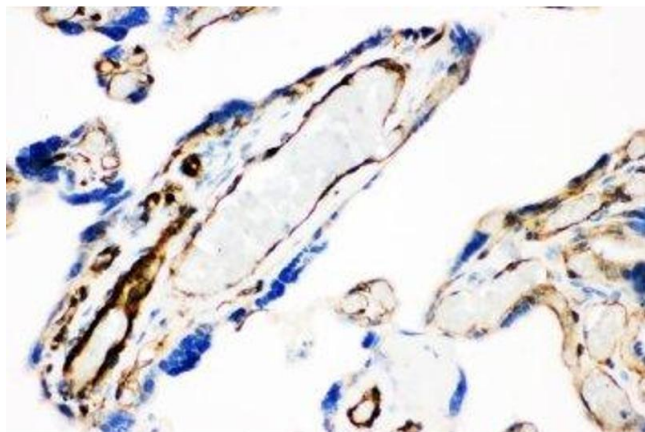
Western Blotting

Image 1. Western blot testing of Caveolin-1 antibody and
Lane 1: HeLa; 2: HT1080; 3: human placenta; 4: A431



Western Blotting

Image 2. Western blot testing of Caveolin-1 antibody and
recombinant human protein (0.5ng)



Immunohistochemistry

Image 3. IHC-P: Caveolin-1 antibody testing of human
placenta tissue

Please check the [product details page](#) for more images. Overall 7 images are available for ABIN3030338.