



Datasheet for ABIN3030339
anti-Caveolin 2 antibody (AA 1-17)



[Go to Product page](#)

6 Images

Overview

Quantity:	100 µg
Target:	Caveolin 2 (CAV2)
Binding Specificity:	AA 1-17
Reactivity:	Human, Mouse, Rat
Host:	Rabbit
Clonality:	Polyclonal
Conjugate:	This Caveolin 2 antibody is un-conjugated
Application:	Western Blotting (WB), Immunohistochemistry (Paraffin-embedded Sections) (IHC (p))

Product Details

Immunogen:	Amino acids 1-17 (MGLETEKADVQLFMDDD-human) were used as the immunogen for this Caveolin-2 antibody.
Isotype:	IgG
Purification:	Antigen affinity

Target Details

Target:	Caveolin 2 (CAV2)
Alternative Name:	Caveolin-2 (CAV2 Products)
Background:	Caveolin-2 is a protein related to caveolin-1 which is derived caveolin-enriched membranes. CAV2 and CAV1 are similar in most respects and they differ in their functional interactions with heterotrimeric G proteins. Both are expressed in neuronal cells. Caveolin-2 was upregulated in

Target Details

response to neuronal cell injury. The CAV2 gene is mapped to 7q31.1-q31.2. The CAV1 gene contains 3 exons, while the human CAV2 gene contains 2 exons. The boundary of the last exon of both are analogous, suggesting that they arose through gene duplication. The genes encoding murine caveolin-1 and -2 are colocalized within the A2 region of mouse chromosome 6.

UniProt: [P51636](#)

Pathways: [Regulation of G-Protein Coupled Receptor Protein Signaling, Skeletal Muscle Fiber Development](#)

Application Details

Application Notes: The stated application concentrations are suggested starting points. Titration of the Caveolin-2 antibody may be required due to differences in protocols and secondary/substrate sensitivity.\. Western blot: 0.5-1 µg/mL,IHC (Paraffin): 0.5-1 µg/mL

Restrictions: For Research Use only

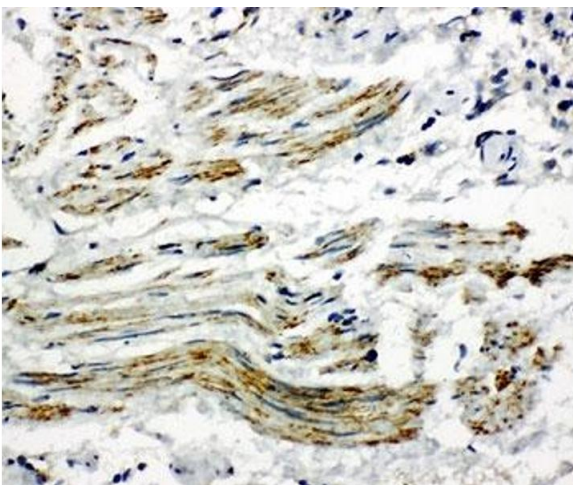
Handling

Buffer: 0.5 mg/mL if reconstituted with 0.2 mL sterile DI water

Storage: -20 °C

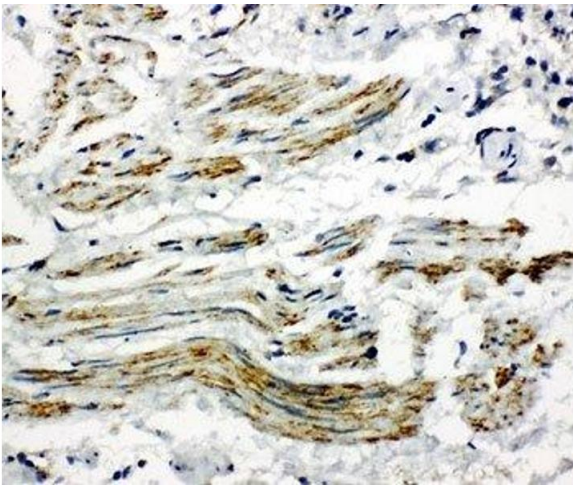
Storage Comment: After reconstitution, the Caveolin-2 antibody can be stored for up to one month at 4°C. For long-term, aliquot and store at -20°C. Avoid repeated freezing and thawing.

Images



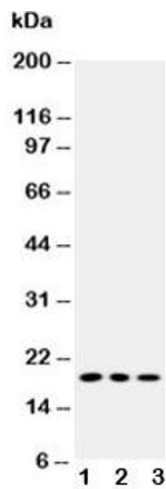
Immunohistochemistry

Image 1. IHC-P: Caveolin-2 antibody testing of human lung cancer tissue



Immunohistochemistry

Image 2. IHC-P: Caveolin-2 antibody testing of human lung cancer tissue



Western Blotting

Image 3. Western blot testing of Caveolin-2 antibody and
Lane 1: HeLa; 2: SMMC-7721; 3: COLO320 cell lysate

Please check the [product details page](#) for more images. Overall 6 images are available for ABIN3030339.