

Datasheet for ABIN3030345  
**anti-CEBPB antibody (AA 99-131)**



[Go to Product page](#)

2 Images

## Overview

Quantity:	0.4 mL
Target:	CEBPB
Binding Specificity:	AA 99-131
Reactivity:	Rat
Host:	Rabbit
Clonality:	Polyclonal
Conjugate:	This CEBPB antibody is un-conjugated
Application:	Western Blotting (WB), ELISA

## Product Details

Immunogen:	This Cebpb antibody was produced from a rabbit immunized with a KLH conjugated synthetic peptide between 99-131 amino acids from the rat protein.
Isotype:	Ig Fraction
Purification:	Antigen affinity purified

## Target Details

Target:	CEBPB
Alternative Name:	Cebpb ( <a href="#">CEBPB Products</a> )
Background:	Important transcriptional activator regulating the expression of genes involved in immune and inflammatory responses. Binds to regulatory regions of several acute-phase and cytokines genes and probably plays a role in the regulation of acute-phase reaction, inflammation and

## Target Details

hemopoiesis. The consensus recognition site is 5'-T[**TG**]NNGNAA[**TG**]-3'. Functions in brown adipose tissue (BAT) differentiation. Regulates the transcriptional induction of peroxisome proliferator-activated receptor gamma (PPARG).

UniProt: [P21272](#)

Pathways: [Interferon-gamma Pathway](#), [Autophagy](#), [Brown Fat Cell Differentiation](#)

## Application Details

Application Notes: Titration of the Cebpb antibody may be required due to differences in protocols and secondary/substrate sensitivity.\. Western blot: 1:1000

Restrictions: For Research Use only

## Handling

Format: Liquid

Buffer: In 1X PBS, pH 7.4, with 0.09 % sodium azide

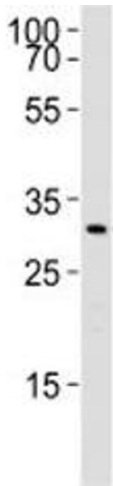
Preservative: Sodium azide

Precaution of Use: This product contains Sodium azide: a POISONOUS AND HAZARDOUS SUBSTANCE which should be handled by trained staff only.

Storage: -20 °C

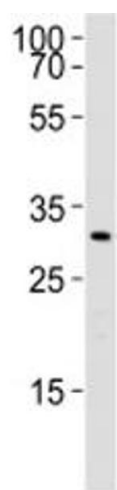
Storage Comment: Aliquot the Cebpb antibody and store frozen at -20°C or colder. Avoid repeated freeze-thaw cycles.

## Images



### Western Blotting

**Image 1.** Western blot analysis of lysate from rat liver using Cebpb antibody. Ab was diluted at 1:1000.



**Western Blotting**

**Image 2.** Western blot analysis of lysate from rat liver using Cebpb antibody. Ab was diluted at 1:1000.