

Datasheet for ABIN3030354

anti-Endoglin antibody (AA 380-409)**5** Images[Go to Product page](#)

Overview

Quantity:	0.4 mL
Target:	Endoglin (ENG)
Binding Specificity:	AA 380-409
Reactivity:	Human, Mouse
Host:	Rabbit
Clonality:	Polyclonal
Conjugate:	This Endoglin antibody is un-conjugated
Application:	Western Blotting (WB), Flow Cytometry (FACS), Immunohistochemistry (IHC), ELISA

Product Details

Immunogen:	A portion of amino acids 380-409 from the human protein was used as the immunogen for this CD105 antibody.
Isotype:	Ig Fraction
Purification:	Purified

Target Details

Target:	Endoglin (ENG)
Alternative Name:	CD105 (ENG Products)
Background:	CD105 is a homodimeric transmembrane protein which is a major glycoprotein of the vascular endothelium. This protein is a component of the transforming growth factor beta receptor complex and it binds TGFB1 and TGFB3 with high affinity. Mutations in its gene cause

Target Details

	hereditary hemorrhagic telangiectasia, also known as Osler-Rendu-Weber syndrome 1, an autosomal dominant multisystemic vascular dysplasia.
UniProt:	P17813

Application Details

Application Notes:	Titration of the CD105 antibody may be required due to differences in protocols and secondary/substrate sensitivity.\. Western blot: 1:1000,IHC (Paraffin): 1:10-1:50,Flow Cytometry: 1:10-1:50
Restrictions:	For Research Use only

Handling

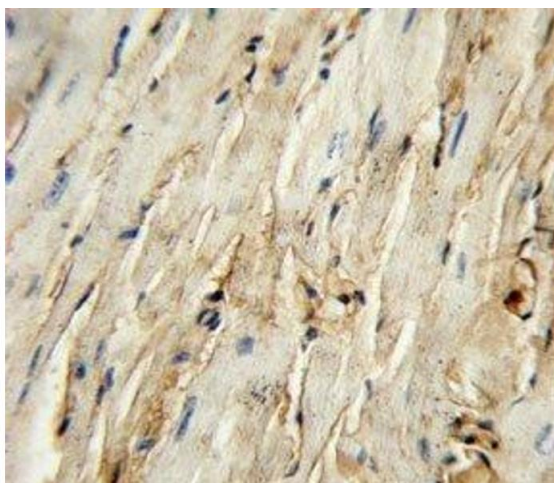
Format:	Liquid
Buffer:	In 1X PBS, pH 7.4, with 0.09 % sodium azide
Preservative:	Sodium azide
Precaution of Use:	This product contains Sodium azide: a POISONOUS AND HAZARDOUS SUBSTANCE which should be handled by trained staff only.
Storage:	-20 °C
Storage Comment:	Aliquot the CD105 antibody and store frozen at -20°C or colder. Avoid repeated freeze-thaw cycles.

Images



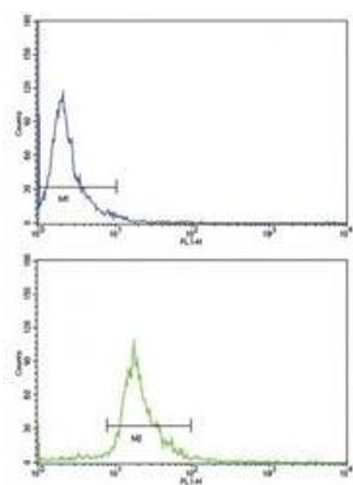
Western Blotting

Image 1. Western blot analysis of CD105 antibody and mouse heart tissue lysate



Immunohistochemistry

Image 2. CD105 antibody immunohistochemistry analysis in formalin fixed and paraffin embedded mouse heart tissue.



Flow Cytometry

Image 3. Flow cytometric analysis of NCI-H292 cells using CD105 antibody (bottom histogram) compared to a negative control (top histogram). FITC-conjugated goat-anti-rabbit secondary Ab was used for the analysis.

Please check the [product details page](#) for more images. Overall 5 images are available for ABIN3030354.