



[Go to Product page](#)

Datasheet for ABIN3030357
anti-CD14 antibody (AA 292-322)

7 Images

Overview

Quantity:	0.4 mL
Target:	CD14
Binding Specificity:	AA 292-322
Reactivity:	Human
Host:	Rabbit
Clonality:	Polyclonal
Conjugate:	This CD14 antibody is un-conjugated
Application:	Flow Cytometry (FACS), Western Blotting (WB), Immunohistochemistry (IHC), ELISA

Product Details

Immunogen:	A portion of amino acids 292-322 from the human protein was used as the immunogen for this CD14 antibody.
Isotype:	Ig Fraction
Purification:	Purified

Target Details

Target:	CD14
Alternative Name:	CD14 (CD14 Products)
Background:	In concert with LBP, CD14 binds to monomeric lipopolysaccharide and delivers it to the MD-2/TLR4 complex, thereby mediating the innate immune response to bacterial lipopolysaccharide (LPS). Acts via MyD88, TIRAP and TRAF6, leading to NF-kappa-B activation,

Target Details

cytokine secretion and the inflammatory response. Up-regulates cell surface molecules, including adhesion molecules. [UniProt]

UniProt: [P08571](#)

Pathways: [TLR Signaling](#), [Activation of Innate immune Response](#), [Cellular Response to Molecule of Bacterial Origin](#), [Toll-Like Receptors Cascades](#)

Application Details

Application Notes: The stated application concentrations are suggested starting amounts. Titration of the CD14 antibody may be required due to differences in protocols and secondary/substrate sensitivity.\. Western blot: 1:1000,IHC (Paraffin): 1:10-1:50,Flow Cytometry: 1:10-1:50

Restrictions: For Research Use only

Handling

Format: Liquid

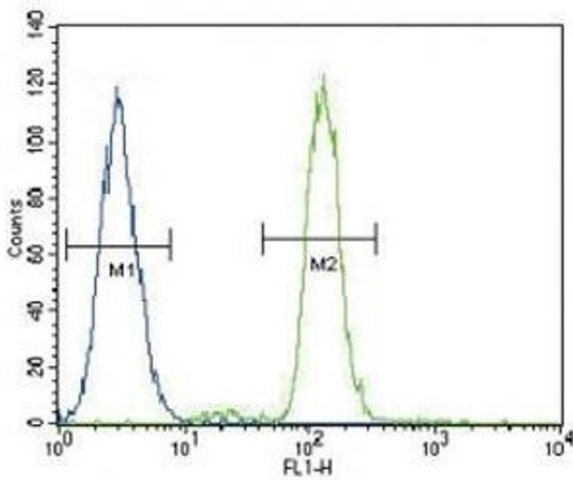
Buffer: In 1X PBS, pH 7.4, with 0.09 % sodium azide

Preservative: Sodium azide

Precaution of Use: This product contains Sodium azide: a POISONOUS AND HAZARDOUS SUBSTANCE which should be handled by trained staff only.

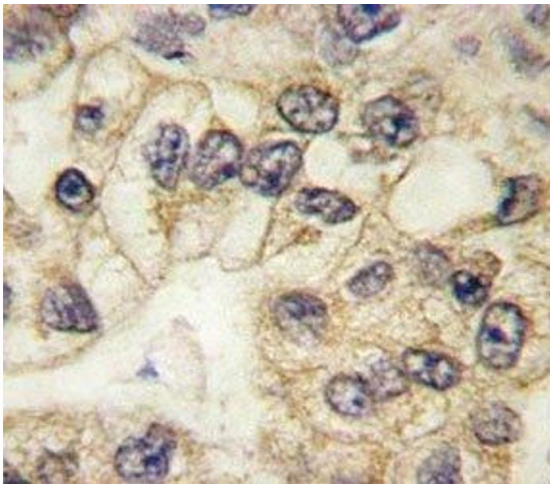
Storage: -20 °C

Storage Comment: Store at 4°C for up to one month. For long term, aliquot the CD14 antibody and store frozen at -20°C or colder. Avoid repeated freeze-thaw cycles.



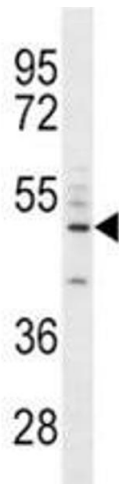
Flow Cytometry

Image 1. CD14 antibody flow cytometric analysis of A549 cells (green) compared to a negative control (blue).



Immunohistochemistry

Image 2. CD14 antibody used to stain FFPE human lung carcinoma



Western Blotting

Image 3. CD14 antibody western blot analysis in A549 lysate. Predicted size 40-55 kDa depending on glycosylation level

Please check the [product details page](#) for more images. Overall 7 images are available for ABIN3030357.