

Datasheet for ABIN3030360
anti-CD163 antibody (AA 245-274)



[Go to Product page](#)

3 Images

Overview

Quantity:	0.4 mL
Target:	CD163
Binding Specificity:	AA 245-274
Reactivity:	Human
Host:	Rabbit
Clonality:	Polyclonal
Conjugate:	This CD163 antibody is un-conjugated
Application:	Western Blotting (WB), Immunohistochemistry (IHC), ELISA

Product Details

Immunogen:	A portion of amino acids 245-274 from the human protein was used as the immunogen for this CD163 antibody.
Isotype:	Ig Fraction
Purification:	Purified

Target Details

Target:	CD163
Alternative Name:	CD163 (CD163 Products)
Background:	CD163 is an acute phase-regulated receptor involved in clearance and endocytosis of hemoglobin/haptoglobin complexes by macrophages and may thereby protect tissues from free hemoglobin-mediated oxidative damage. The protein may play a role in the uptake and

Target Details

recycling of iron, via endocytosis of hemoglobin/haptoglobin and subsequent breakdown of heme. It binds hemoglobin/haptoglobin complexes in a calcium-dependent and pH -dependent manner. And it exhibits a higher affinity for complexes of hemoglobin and multimeric haptoglobin of HP*1F phenotype than for complexes of hemoglobin and dimeric haptoglobin of HP*1S phenotype. It also induces a cascade of intracellular signals that involves tyrosine kinase-dependent calcium mobilization, inositol triphosphate production and secretion of IL6 and CSF1.

UniProt: [Q86VB7](#)

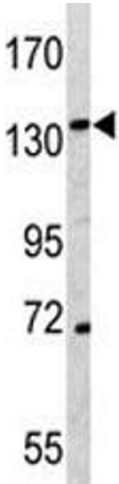
Application Details

Application Notes: Titration of the CD163 antibody may be required due to differences in protocols and secondary/substrate sensitivity.\. Western blot: 1:1000,IHC (Paraffin): 1:10-1:50

Restrictions: For Research Use only

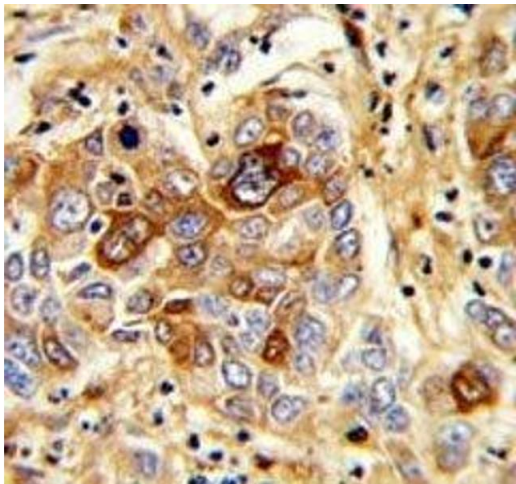
Handling

Format:	Liquid
Buffer:	In 1X PBS pH 7.4 with 0.09 % sodium azide
Preservative:	Sodium azide
Precaution of Use:	This product contains Sodium azide: a POISONOUS AND HAZARDOUS SUBSTANCE which should be handled by trained staff only.
Storage:	-20 °C
Storage Comment:	Aliquot the CD163 antibody and store frozen at -20°C or colder. Avoid repeated freeze-thaw cycles.



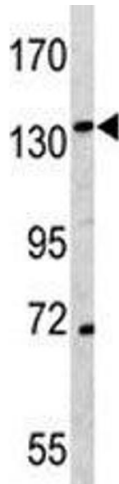
Western Blotting

Image 1. Western blot analysis of CD163 antibody and K562 lysate



Immunohistochemistry

Image 2. IHC analysis of FFPE human hepatocarcinoma with CD163 antibody



Western Blotting

Image 3. Western blot analysis of CD163 antibody and K562 lysate