

Datasheet for ABIN3030362  
**anti-CD19 antibody (AA 143-172)**

10 Images

[Go to Product page](#)

## Overview

Quantity:	0.4 mL
Target:	CD19
Binding Specificity:	AA 143-172
Reactivity:	Human
Host:	Rabbit
Clonality:	Polyclonal
Conjugate:	This CD19 antibody is un-conjugated
Application:	Flow Cytometry (FACS), Western Blotting (WB), Immunofluorescence (IF), Immunohistochemistry (IHC), ELISA

## Product Details

Immunogen:	A portion of amino acids 143-172 from the human protein was used as the immunogen for this CD19 antibody.
Isotype:	Ig Fraction
Purification:	Antigen affinity purified

## Target Details

Target:	CD19
Alternative Name:	CD19 ( <a href="#">CD19 Products</a> )
Background:	Lymphocytes proliferate and differentiate in response to various concentrations of different antigens. The ability of the B cell to respond in a specific, yet sensitive manner to the various

## Target Details

antigens is achieved with the use of low-affinity antigen receptors. CD19 is a cell surface molecule which assembles with the antigen receptor of B lymphocytes in order to decrease the threshold for antigen receptor-dependent stimulation.

UniProt: [P15391](#)

Pathways: [Fc-epsilon Receptor Signaling Pathway](#), [EGFR Signaling Pathway](#), [Neurotrophin Signaling Pathway](#)

## Application Details

Application Notes: Titration of the CD19 antibody may be required due to differences in protocols and secondary/substrate sensitivity.\. Western blot: 1:500-100,Immunofluorescence: 1:10-1:50,Flow Cytometry: 1:10-1:50,IHC (Paraffin): 1:10-1:50

Restrictions: For Research Use only

## Handling

Format: Liquid

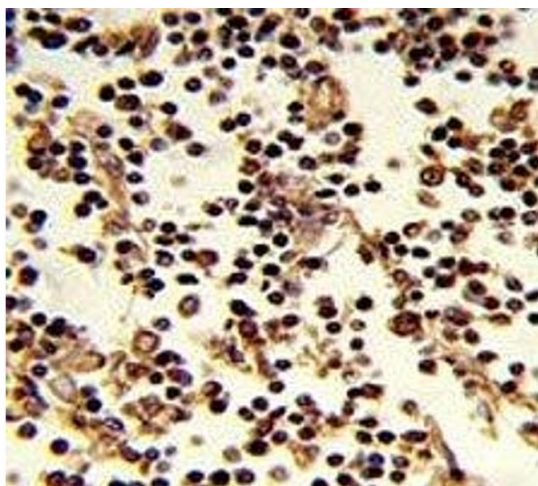
Buffer: In 1X PBS pH 7.4 with 0.09 % sodium azide

Preservative: Sodium azide

Precaution of Use: This product contains Sodium azide: a POISONOUS AND HAZARDOUS SUBSTANCE which should be handled by trained staff only.

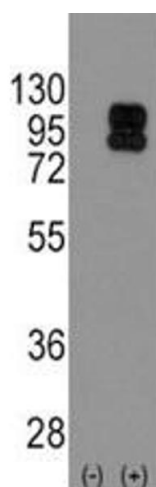
Storage: -20 °C

Storage Comment: Aliquot the CD19 antibody and store frozen at -20°C or colder. Avoid repeated freeze-thaw cycles.



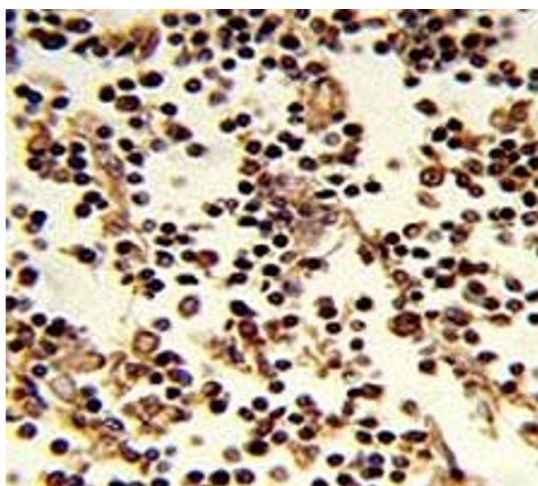
#### Immunohistochemistry

**Image 1.** IHC analysis of FFPE human lymph stained with CD19 antibody



#### Western Blotting

**Image 2.** Western blot analysis of CD19 antibody and 293 cell lysate (2 ug/lane) either nontransfected (Lane 1) or transiently transfected with the CD19 gene (2). Expected size is 60~100 kDa depending on glycosylation level.



#### Immunohistochemistry

**Image 3.** IHC analysis of FFPE human lymph stained with CD19 antibody

Please check the [product details page](#) for more images. Overall 10 images are available for ABIN3030362.