



[Go to Product page](#)

Datasheet for ABIN3030370  
**anti-CD1d antibody (AA 76-92)**

3 Images

Overview

Quantity:	100 µg
Target:	CD1d (CD1D)
Binding Specificity:	AA 76-92
Reactivity:	Human
Host:	Rabbit
Clonality:	Polyclonal
Conjugate:	This CD1d antibody is un-conjugated
Application:	Western Blotting (WB), Immunohistochemistry (Paraffin-embedded Sections) (IHC (p))

Product Details

Immunogen:	Amino acids 76-92 (FSDQQWETLQHIFRVYR-human) were used as the immunogen for this CD1d antibody.
Isotype:	IgG
Purification:	Antigen affinity

Target Details

Target:	CD1d (CD1D)
Alternative Name:	CD1d ( <a href="#">CD1D Products</a> )
Background:	CD1d is the sole group-2 member of the CD1 family of major histocompatibility (MHC)-like glycoproteins expressed on the surface of various human antigen-presenting cells. They are related to the class I MHC molecules, and are involved in the presentation of lipid antigens to T

## Target Details

---

cells. CD1d presented lipid antigens activate a special class of T cells, known as Natural Killer T (NKT) cells. When activated, NKT cells rapidly produce Th1 and Th2 cytokines, typically represented by interferon-gamma and IL-4 production. Jayawardena-Wolf et al. described 2 different pathways of CD1d trafficking to endosomal compartments in mouse cells. A tyrosine-based motif governs recycling between the plasma membrane and the endosome, while CD1d associates, like major histocompatibility complex class II antigens, with the invariant chain, or Ii, in the endoplasmic reticulum. Both pathways enhance antigen presentation to CD1d-restricted natural killer T cells.

---

UniProt: [P15813](#)

---

Pathways: [Regulation of Leukocyte Mediated Immunity](#), [Positive Regulation of Immune Effector Process](#)

## Application Details

---

Application Notes: The stated application concentrations are suggested starting amounts. Titration of the CD1d antibody may be required due to differences in protocols and secondary/substrate sensitivity.\. Western blot: 0.5-1 µg/mL,IHC (Paraffin): 0.5-1 µg/mL

---

Restrictions: For Research Use only

## Handling

---

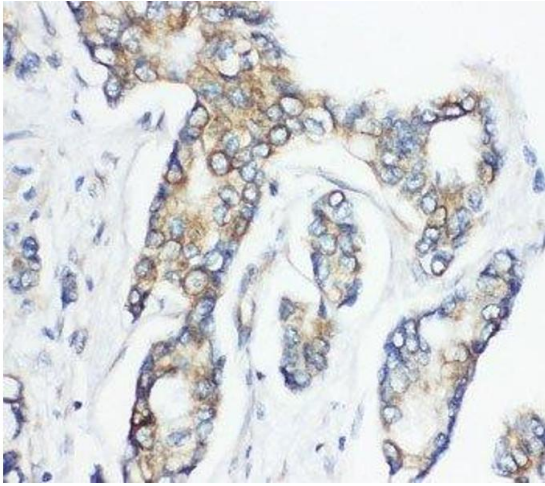
Buffer: 0.5 mg/mL if reconstituted with 0.2 mL sterile DI water

---

Storage: -20 °C

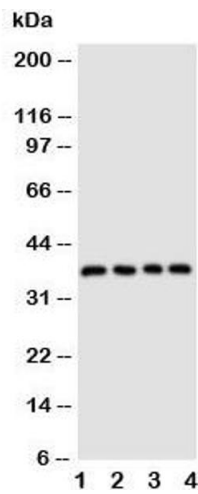
---

Storage Comment: After reconstitution, the CD1d antibody can be stored for up to one month at 4°C. For long-term, aliquot and store at -20°C. Avoid repeated freezing and thawing.



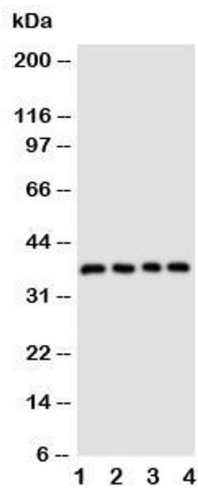
### Immunohistochemistry

**Image 1.** IHC-P: CD1d antibody testing of human breast cancer tissue



### Western Blotting

**Image 2.** Western blot testing of CD1d antibody and Lane 1: COL0320; 2: HeLa; 3: HT1080; 4: Jurkat cell lysate



### Western Blotting

**Image 3.** Western blot testing of CD1d antibody and Lane 1: COL0320