

Datasheet for ABIN3030387  
**anti-CD36 antibody (AA 213-242)**



[Go to Product page](#)

6 Images

## Overview

Quantity:	0.4 mL
Target:	CD36
Binding Specificity:	AA 213-242
Reactivity:	Human
Host:	Rabbit
Clonality:	Polyclonal
Conjugate:	This CD36 antibody is un-conjugated
Application:	Flow Cytometry (FACS), Western Blotting (WB), Immunofluorescence (IF), Immunohistochemistry (IHC), ELISA

## Product Details

Immunogen:	A portion of amino acids 213-242 from the human protein was used as the immunogen for this CD36 antibody.
Isotype:	Ig Fraction
Purification:	Purified

## Target Details

Target:	CD36
Alternative Name:	CD36 ( <a href="#">CD36 Products</a> )
Background:	CD36 is the fourth major glycoprotein of the platelet surface and serves as a receptor for thrombospondin in platelets and various cell lines. Since thrombospondins are widely

## Target Details

distributed proteins involved in a variety of adhesive processes, this protein may have important functions as a cell adhesion molecule. It binds to collagen, thrombospondin, anionic phospholipids and oxidized LDL. It directly mediates cytoadherence of Plasmodium falciparum parasitized erythrocytes and it binds long chain fatty acids and may function in the transport and/or as a regulator of fatty acid transport. Mutations in its gene cause platelet glycoprotein deficiency.

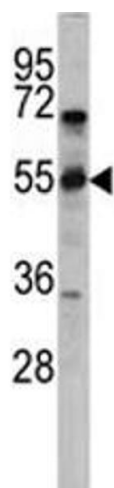
UniProt:	<a href="#">P16671</a>
Pathways:	<a href="#">TLR Signaling</a> , <a href="#">Peptide Hormone Metabolism</a> , <a href="#">Response to Growth Hormone Stimulus</a> , <a href="#">Activation of Innate immune Response</a> , <a href="#">Cellular Response to Molecule of Bacterial Origin</a> , <a href="#">Regulation of Lipid Metabolism by PPARalpha</a> , <a href="#">Positive Regulation of Immune Effector Process</a> , <a href="#">Production of Molecular Mediator of Immune Response</a> , <a href="#">Hepatitis C</a> , <a href="#">Toll-Like Receptors Cascades</a> , <a href="#">Lipid Metabolism</a> , <a href="#">S100 Proteins</a>

## Application Details

Application Notes:	Titration of the CD36 antibody may be required due to differences in protocols and secondary/substrate sensitivity.\. Western blot: 1:1000,IHC (Paraffin): 1:10-1:50,Flow Cytometry: 1:10-1:50,Immunofluorescence: 1:10-1:50
Restrictions:	For Research Use only

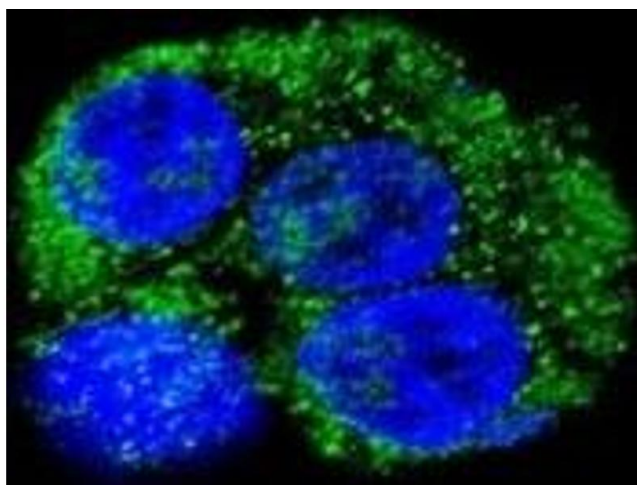
## Handling

Format:	Liquid
Buffer:	In 1X PBS pH 7.4 with 0.09 % sodium azide
Preservative:	Sodium azide
Precaution of Use:	This product contains Sodium azide: a POISONOUS AND HAZARDOUS SUBSTANCE which should be handled by trained staff only.
Storage:	-20 °C
Storage Comment:	Aliquot the CD36 antibody and store frozen at -20°C or colder. Avoid repeated freeze-thaw cycles.



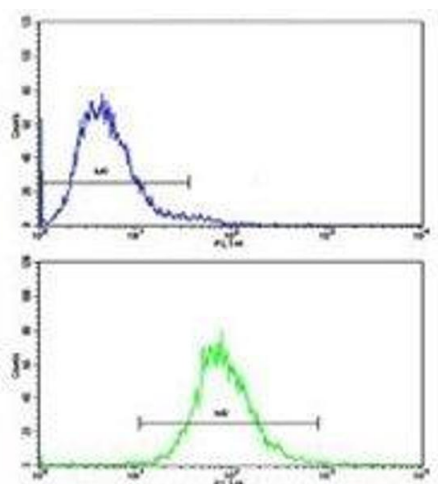
#### Western Blotting

**Image 1.** Western blot analysis of CD36 antibody and CEM lysate.



#### Immunofluorescence

**Image 2.** Confocal immunofluorescent analysis of CD36 antibody with HepG2 cells followed by Alexa Fluor 488-conjugated goat anti-rabbit IgG (green). DAPI was used as a nuclear counterstain (blue).



#### Flow Cytometry

**Image 3.** Flow cytometric analysis of CEM cells using CD36 antibody (bottom histogram) compared to a negative control (top histogram). FITC-conjugated goat-anti-rabbit secondary Ab was used for the analysis.

Please check the [product details page](#) for more images. Overall 6 images are available for ABIN3030387.