



Datasheet for ABIN3030390 anti-CD4 antibody (AA 58-86)



[Go to Product page](#)

5 Images

Overview

Quantity:	0.4 mL
Target:	CD4
Binding Specificity:	AA 58-86
Reactivity:	Human
Host:	Rabbit
Clonality:	Polyclonal
Conjugate:	This CD4 antibody is un-conjugated
Application:	Flow Cytometry (FACS), Western Blotting (WB), ELISA

Product Details

Immunogen:	A portion of amino acids 58-86 from the human protein was used as the immunogen for this CD4 antibody.
Isotype:	Ig Fraction
Purification:	Antigen affinity purified

Target Details

Target:	CD4
Alternative Name:	CD4 (CD4 Products)
Background:	CD4 is a single chain transmembrane glycoprotein (59 kDa) which belongs to the immunoglobulin superfamily. CD4 is present on a subset of T lymphocytes (helper/inducer T cells) and is also expressed at a lower level on monocytes, tissue macrophages and

Target Details

granulocytes. The antigen is involved in binding to MHC class II molecules. The intracellular domain of the antigen is associated with p56lck protein tyrosine kinase.

UniProt: [P01730](#)

Pathways: [TCR Signaling](#), [Maintenance of Protein Location](#), [CXCR4-mediated Signaling Events](#)

Application Details

Application Notes: Titration of the CD4 antibody may be required due to differences in protocols and secondary/substrate sensitivity.\. Western blot: 1:1000,Flow Cytometry: 1:10-1:50

Restrictions: For Research Use only

Handling

Format: Liquid

Buffer: In 1X PBS pH 7.4 with 0.09 % sodium azide

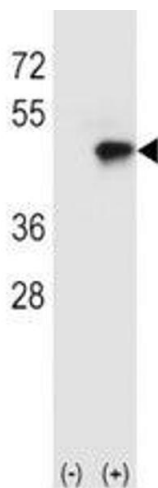
Preservative: Sodium azide

Precaution of Use: This product contains Sodium azide: a POISONOUS AND HAZARDOUS SUBSTANCE which should be handled by trained staff only.

Storage: -20 °C

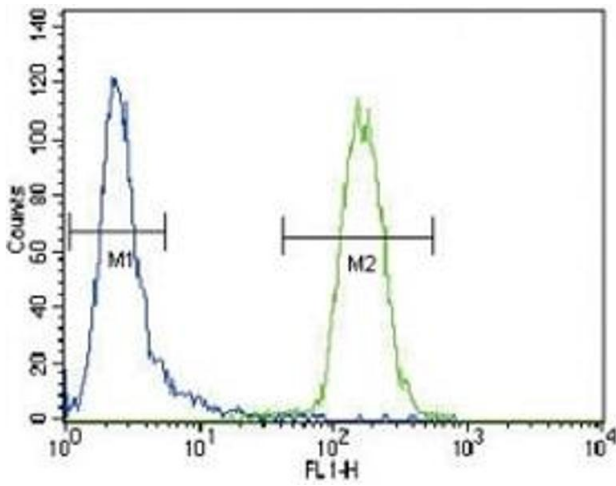
Storage Comment: Aliquot the CD4 antibody and store frozen at -20°C or colder. Avoid repeated freeze-thaw cycles.

Images



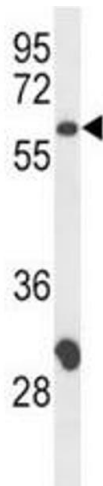
Western Blotting

Image 1. Western blot analysis of CD4 antibody and 293 cell lysate (2 ug/lane) either nontransfected (Lane 1) or transiently transfected with the CD4 gene (2).



Flow Cytometry

Image 2. CD4 antibody flow cytometric analysis of CEM cells (right histogram) compared to a negative control cell (left histogram). FITC-conjugated goat-anti-rabbit secondary Ab was used for the analysis.



Western Blotting

Image 3. Western blot analysis of CD4 antibody and CEM lysate; Expected size: 40~60 kDa depending on glycosylation level

Please check the [product details page](#) for more images. Overall 5 images are available for ABIN3030390.