

Datasheet for ABIN3030431
anti-CD8 alpha antibody (AA 150-180)

5 Images

[Go to Product page](#)

Overview

Quantity:	0.4 mL
Target:	CD8 alpha (CD8A)
Binding Specificity:	AA 150-180
Reactivity:	Human
Host:	Rabbit
Clonality:	Polyclonal
Conjugate:	This CD8 alpha antibody is un-conjugated
Application:	Flow Cytometry (FACS), Immunohistochemistry (IHC), Western Blotting (WB), ELISA

Product Details

Immunogen:	A portion of amino acids 150-180 from the human protein was used as the immunogen for this CD8 antibody.
Isotype:	Ig Fraction
Purification:	Antigen affinity purified

Target Details

Target:	CD8 alpha (CD8A)
Alternative Name:	CD8A (CD8A Products)
Background:	The CD8 antigen is a cell surface glycoprotein found on most cytotoxic T lymphocytes that mediates efficient cell-cell interactions within the immune system. The CD8 antigen, acting as a co-receptor, and the T-cell receptor on the T lymphocyte recognize antigen displayed by an

Target Details

antigen presenting cell (APC) in the context of class I MHC molecules. The functional co-receptor is either a homodimer composed of two alpha chains, or a heterodimer composed of one alpha and one beta chain. Both alpha and beta chains share significant homology to immunoglobulin variable light chains.

UniProt: [P01732](#)

Pathways: [TCR Signaling](#)

Application Details

Application Notes: Titration of the CD8 antibody may be required due to differences in protocols and secondary/substrate sensitivity.\. Western blot: 1:1000,IHC (Paraffin): 1:10-1:50,Flow Cytometry: 1:10-1:50

Restrictions: For Research Use only

Handling

Format: Liquid

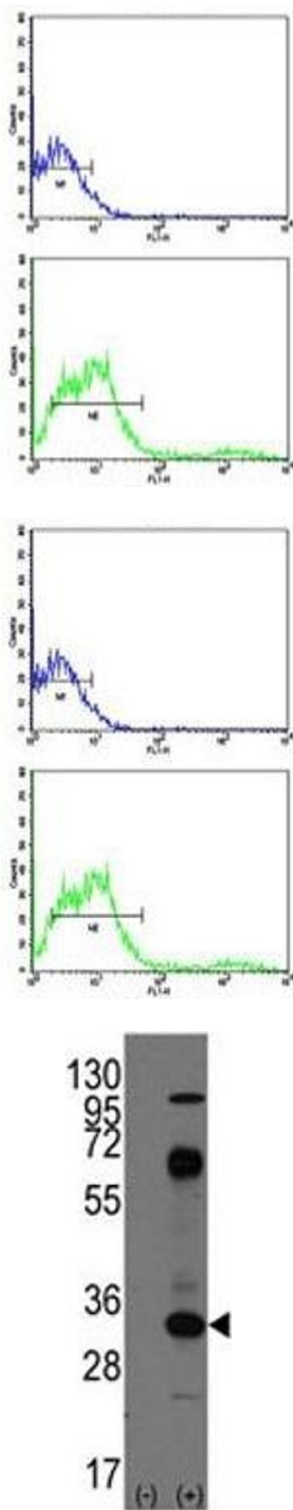
Buffer: In 1X PBS, pH 7.4, with 0.09 % sodium azide

Preservative: Sodium azide

Precaution of Use: This product contains Sodium azide: a POISONOUS AND HAZARDOUS SUBSTANCE which should be handled by trained staff only.

Storage: -20 °C

Storage Comment: Aliquot the CD8 antibody and store frozen at -20°C or colder. Avoid repeated freeze-thaw cycles.



Flow Cytometry

Image 1. Flow cytometric analysis of NCI-H292 cells using CD8 antibody (bottom histogram) compared to a negative control (top histogram). FITC-conjugated goat-anti-rabbit secondary Ab was used for the analysis.

Flow Cytometry

Image 2. Flow cytometric analysis of NCI-H292 cells using CD8 antibody (bottom histogram) compared to a negative control (top histogram). FITC-conjugated goat-anti-rabbit secondary Ab was used for the analysis.

Western Blotting

Image 3. Western blot analysis of CD8 antibody and 293 cell lysate (2 ug/lane) either nontransfected (Lane 1) or transiently transfected with the CD8A gene (2).

Please check the [product details page](#) for more images. Overall 5 images are available for ABIN3030431.