



[Go to Product page](#)

Datasheet for ABIN3030464
anti-CDC6 antibody (AA 32-61)

2 Images

Overview

Quantity:	0.4 mL
Target:	CDC6
Binding Specificity:	AA 32-61
Reactivity:	Human
Host:	Rabbit
Clonality:	Polyclonal
Conjugate:	This CDC6 antibody is un-conjugated
Application:	Western Blotting (WB), ELISA

Product Details

Immunogen:	A portion of amino acids 32-61 from the human protein was used as the immunogen for this CDC6 antibody.
Isotype:	Ig Fraction
Purification:	Antigen affinity purified

Target Details

Target:	CDC6
Alternative Name:	CDC6 (CDC6 Products)
Background:	Human CDC6 is highly similar to <i>Saccharomyces cerevisiae</i> Cdc6, a protein essential for the initiation of DNA replication. This protein functions as a regulator at the early steps of DNA replication. It localizes in cell nucleus during cell cycle G1, but translocates to the cytoplasm at

Target Details

the start of S phase. The subcellular translocation of this protein during cell cycle is regulated through its phosphorylation by Cdks. Transcription of this protein was reported to be regulated in response to mitogenic signals through transcriptional control mechanism involving E2F proteins.

UniProt: [Q99741](#)

Pathways: [DNA Replication](#), [Synthesis of DNA](#)

Application Details

Application Notes: Titration of the CDC6 antibody may be required due to differences in protocols and secondary/substrate sensitivity.\. Western blot: 1:1000

Restrictions: For Research Use only

Handling

Format: Liquid

Buffer: In 1X PBS, pH 7.4, with 0.09 % sodium azide

Preservative: Sodium azide

Precaution of Use: This product contains Sodium azide: a POISONOUS AND HAZARDOUS SUBSTANCE which should be handled by trained staff only.

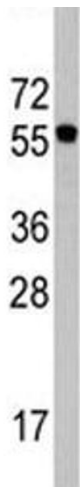
Storage: -20 °C

Storage Comment: Aliquot the CDC6 antibody and store frozen at -20°C or colder. Avoid repeated freeze-thaw cycles.



Western Blotting

Image 1. Western blot analysis of CDC6 antibody in Ramos lysate. Predicted molecular weight ~62 kDa.



Western Blotting

Image 2. Western blot analysis of CDC6 antibody in Ramos lysate. Predicted molecular weight ~62 kDa.