

Datasheet for ABIN3030473
anti-XCL1 antibody (C-Term)

3 Images

[Go to Product page](#)

Overview

Quantity:	100 µg
Target:	XCL1
Binding Specificity:	C-Term
Reactivity:	Mouse
Host:	Rabbit
Clonality:	Polyclonal
Conjugate:	This XCL1 antibody is un-conjugated
Application:	Western Blotting (WB), Immunohistochemistry (Paraffin-embedded Sections) (IHC (p))

Product Details

Immunogen:	An amino acid sequence from the C-terminus of mouse Lymphotactin (KTVDGRASTRKNMAET) was used as the immunogen for this Lymphotactin antibody.
Isotype:	IgG
Purification:	Antigen affinity

Target Details

Target:	XCL1
Alternative Name:	Lymphotactin (XCL1 Products)
Background:	Chemokine(C motif) ligand(XCL1) is a small cytokine belonging to the XC chemokine family that is also known as lymphotactin. Muller et al.(1995) mapped the gene to chromosome 1q23 by FISH. The sequence of the deduced 114-amino acid protein is most homologous to the CC

Target Details

chemokines CCL8 and CCL3. It is found in high levels in spleen, thymus, intestine and peripheral blood leukocytes, and at lower levels in lung, prostate gland and ovary. XCL1 induces the migration of cells expressing XCR1.

UniProt: [P47993](#)

Pathways: [Regulation of Leukocyte Mediated Immunity](#), [Positive Regulation of Immune Effector Process](#), [Production of Molecular Mediator of Immune Response](#), [Activated T Cell Proliferation](#)

Application Details

Application Notes: The stated application concentrations are suggested starting amounts. Titration of the Lymphotactin antibody may be required due to differences in protocols and secondary/substrate sensitivity.\. Western blot: 0.5-1 µg/mL,IHC (Paraffin): 0.5-1 µg/mL

Restrictions: For Research Use only

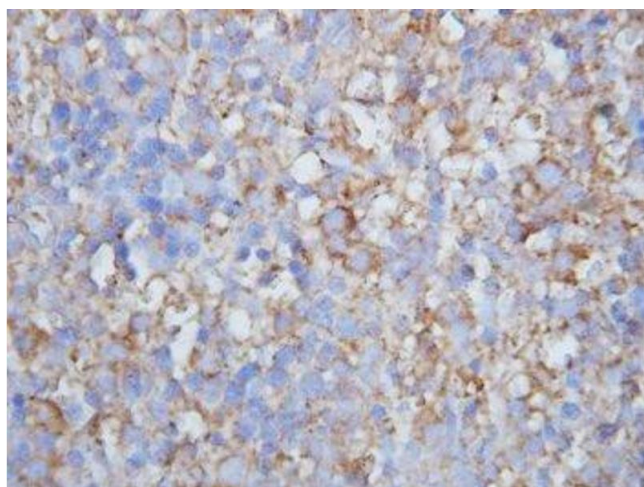
Handling

Buffer: 0.5 mg/mL if reconstituted with 0.2 mL sterile DI water

Storage: -20 °C

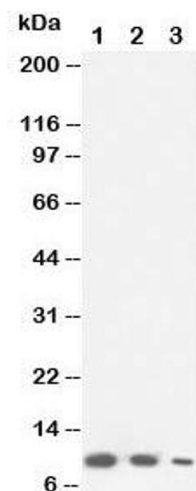
Storage Comment: After reconstitution, the Lymphotactin antibody can be stored for up to one month at 4°C. For long-term, aliquot and store at -20°C. Avoid repeated freezing and thawing.

Images



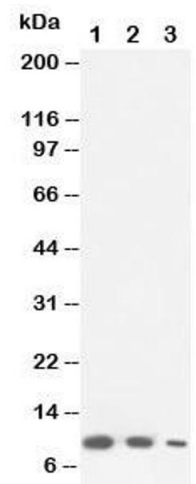
Immunohistochemistry

Image 1. IHC-P: Lymphotactin antibody testing of mouse lymph node



Western Blotting

Image 2. Western blot testing of Lymphotactin antibody and
Lane 1: recombinant mouse protein 10ng; 2: 5ng; 3: 2.5ng



Western Blotting

Image 3. Western blot testing of Lymphotactin antibody and
Lane 1: recombinant mouse protein 10ng