

Datasheet for ABIN3030486
anti-CCL4 antibody (AA 22-48)[Go to Product page](#)

3 Images

Overview

Quantity:	0.4 mL
Target:	CCL4
Binding Specificity:	AA 22-48
Reactivity:	Human, Mouse
Host:	Rabbit
Clonality:	Polyclonal
Conjugate:	This CCL4 antibody is un-conjugated
Application:	Western Blotting (WB), ELISA, Immunohistochemistry (IHC)

Product Details

Immunogen:	A portion of amino acids 22-48 from the human protein was used as the immunogen for this CCL4 antibody.
Isotype:	Ig Fraction
Purification:	Antigen affinity purified

Target Details

Target:	CCL4
Alternative Name:	CCL4 (CCL4 Products)
Background:	<p>This gene is one of several cytokine genes clustered on the q-arm of chromosome 17.</p> <p>Cytokines are a family of secreted proteins involved in immunoregulatory and inflammatory processes. This protein is CCL4 which inhibits HIV entry by binding to the cellular receptor</p>

Target Details

CCR5. The copy number of this gene varies among individuals, most individuals have 1-5 copies in the diploid genome, although rare individuals do not contain this gene at all. The human genome reference assembly contains two copies of this gene. This record represents the more centromeric gene. [provided by RefSeq].

UniProt: [P13236](#)

Application Details

Application Notes: Titration of the CCL4 antibody may be required due to differences in protocols and secondary/substrate sensitivity.\. Western blot: 1:1000,IHC (Paraffin): 1:50-1:100

Restrictions: For Research Use only

Handling

Format: Liquid

Buffer: In 1X PBS, pH 7.4, with 0.09 % sodium azide

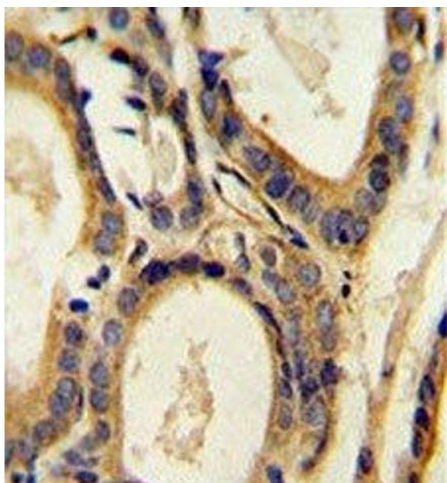
Preservative: Sodium azide

Precaution of Use: This product contains Sodium azide: a POISONOUS AND HAZARDOUS SUBSTANCE which should be handled by trained staff only.

Storage: -20 °C

Storage Comment: Aliquot the CCL4 antibody and store frozen at -20°C or colder. Avoid repeated freeze-thaw cycles.

Images



Immunohistochemistry

Image 1. CCL4 antibody immunohistochemistry analysis in formalin fixed and paraffin embedded human prostate carcinoma.



Western Blotting

Image 2. CCL4 antibody western blot analysis in mouse bladder tissue lysate (15ug/lane).



Western Blotting

Image 3. CCL4 antibody western blot analysis in mouse bladder tissue lysate (15ug/lane).