

Datasheet for ABIN3030490  
**anti-CCR10 antibody (AA 312-327)**[Go to Product page](#)

## 2 Images

## Overview

Quantity:	100 µg
Target:	CCR10
Binding Specificity:	AA 312-327
Reactivity:	Human, Mouse, Rat
Host:	Rabbit
Clonality:	Polyclonal
Conjugate:	This CCR10 antibody is un-conjugated
Application:	Western Blotting (WB)

## Product Details

Immunogen:	Amino acids 312-327 (FLGLRFRQDLRRLRG-human) were used as the immunogen for this CCR10 antibody.
Isotype:	IgG
Purification:	Antigen affinity

## Target Details

Target:	CCR10
Alternative Name:	CCR10 ( <a href="#">CCR10 Products</a> )
Background:	C-C chemokine receptor type 10 is a protein that in humans is encoded by the CCR10 gene. It is constitutively expressed in skin melanocytes, fibroblasts, and microvascular endothelial cells, and that it is upregulated by IL1B and TNF. Expression was also detected in T cells, Langerhans

## Target Details

---

cells, and peripheral blood mononuclear cells but not in dendritic cells. By fluorescence in situ hybridization, the gene is mapped to 17q21.1-q21.3. CCR10 is the receptor for CCL27. CCR10-CCL27 interactions are involved in T cell-mediated skin inflammation. expression of CCL27 in normal keratinocytes and its strong upregulation in skin lesions of atopic dermatitis, contact dermatitis, and psoriasis patients. CCR10+ T lymphocytes were detected in lesional but not normal skin of these patients. Flow cytometric analysis showed that CCL27 binds extracellular matrix components and dermal microvascular endothelial cells and fibroblasts and mediates adhesion and transendothelial migration of CCR10+ circulating leukocytes. The protein is predominantly expressed on CD4+CLA+(cutaneous lymphocyte antigen), rather than CD8+, circulating T cells. RT-PCR, confocal microscopy, and ELISA analysis indicated that keratinocytes exposed to TNF or IL1B but not to IL4 or IFNG in vitro express increased CCL27.

UniProt: [P46092](#)

## Application Details

---

Application Notes: The stated application concentrations are suggested starting amounts. Titration of the CCR10 antibody may be required due to differences in protocols and secondary/substrate sensitivity.\. Western blot: 0.5-1 µg/mL

Restrictions: For Research Use only

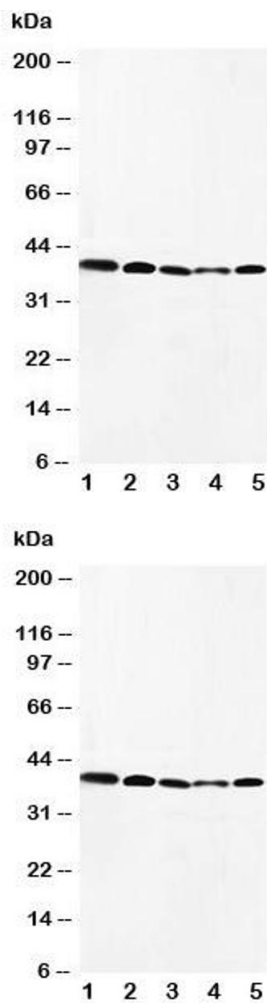
## Handling

---

Buffer: 0.5 mg/mL if reconstituted with 0.2 mL sterile DI water

Storage: -20 °C

Storage Comment: After reconstitution, the CCR10 antibody can be stored for up to one month at 4°C. For long-term, aliquot and store at -20°C. Avoid repeated freezing and thawing.



Western Blotting

**Image 1.** Western blot testing of CCR10 antibody and Lane 1: HeLa; 2: SW620; 3: A549; 4: MM231; 5: SMMC-7721 cell lysate

Western Blotting

**Image 2.** Western blot testing of CCR10 antibody and Lane 1: HeLa