

Datasheet for ABIN3030491
anti-CCR3 antibody (AA 291-318)



[Go to Product page](#)

3 Images

Overview

Quantity:	0.4 mL
Target:	CCR3
Binding Specificity:	AA 291-318
Reactivity:	Human
Host:	Rabbit
Clonality:	Polyclonal
Conjugate:	This CCR3 antibody is un-conjugated
Application:	Western Blotting (WB), ELISA, Flow Cytometry (FACS)

Product Details

Immunogen:	A portion of amino acids 291-318 from the human protein was used as the immunogen for this CCR3 antibody.
Isotype:	Ig Fraction
Cross-Reactivity (Details):	Expected species reactivity: Primate
Purification:	Antigen affinity purified

Target Details

Target:	CCR3
Alternative Name:	CCR3 (CCR3 Products)
Background:	CCR3 is a receptor for C-C type chemokines. It belongs to family 1 of the G protein-coupled

Target Details

receptors. This receptor binds and responds to a variety of chemokines, including eotaxin (CCL11), eotaxin-3 (CCL26), MCP-3 (CCL7), MCP-4 (CCL13), and RANTES (CCL5). It is highly expressed in eosinophils and basophils, and is also detected in TH1 and TH2 cells, as well as in airway epithelial cells. This receptor may contribute to the accumulation and activation of eosinophils and other inflammatory cells in the allergic airway. It is also known to be an entry co-receptor for HIV-1.

UniProt: [P51677](#)

Application Details

Application Notes: Titration of the CCR3 antibody may be required due to differences in protocols and secondary/substrate sensitivity.\. Western blot: 1:1000,Flow Cytometry: 1:10-1:50

Restrictions: For Research Use only

Handling

Format: Liquid

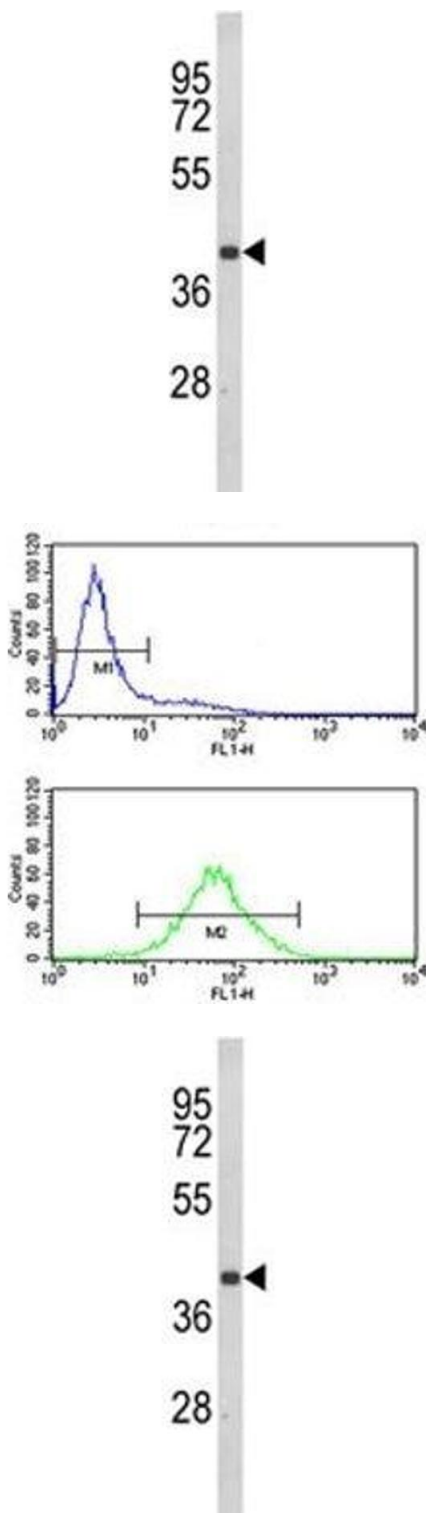
Buffer: In 1X PBS, pH 7.4, with 0.09 % sodium azide

Preservative: Sodium azide

Precaution of Use: This product contains Sodium azide: a POISONOUS AND HAZARDOUS SUBSTANCE which should be handled by trained staff only.

Storage: -20 °C

Storage Comment: Aliquot the CCR3 antibody and store frozen at -20°C or colder. Avoid repeated freeze-thaw cycles.



Western Blotting

Image 1. Western blot analysis of CCR3 antibody and Jurkat lysate. Visualized from 40~55 kDa

Flow Cytometry

Image 2. CCR3 antibody flow cytometry analysis of Jurkat cells (bottom histogram) compared to a negative control (top histogram). FITC-conjugated goat-anti-rabbit secondary Ab was used for the analysis.

Western Blotting

Image 3. Western blot analysis of CCR3 antibody and Jurkat lysate. Visualized from 40~55 kDa