



[Go to Product page](#)

Datasheet for ABIN3030493
anti-CCR4 antibody (AA 262-290)

2 Images

Overview

Quantity:	0.4 mL
Target:	CCR4
Binding Specificity:	AA 262-290
Reactivity:	Human
Host:	Rabbit
Clonality:	Polyclonal
Conjugate:	This CCR4 antibody is un-conjugated
Application:	ELISA, Western Blotting (WB)

Product Details

Immunogen:	A portion of amino acids 262-290 from the human protein was used as the immunogen for this CCR4 antibody.
Isotype:	Ig Fraction
Purification:	Antigen affinity purified

Target Details

Target:	CCR4
Alternative Name:	CCR4 (CCR4 Products)
Background:	The protein encoded by this gene belongs to the G-protein-coupled receptor family . It is a receptor for the CC chemokine - MIP-1, RANTES, TARC and MCP-1. Chemokines are a group of small polypeptide, structurally related molecules that regulate cell trafficking of various types of

Target Details

leukocytes. The chemokines also play fundamental roles in the development, homeostasis, and function of the immune system, and they have effects on cells of the central nervous system as well as on endothelial cells involved in angiogenesis or angiostasis.

UniProt: [P51679](#)

Application Details

Application Notes: Titration of the CCR4 antibody may be required due to differences in protocols and secondary/substrate sensitivity.\. Western blot: 1:1000

Restrictions: For Research Use only

Handling

Format: Liquid

Buffer: In 1X PBS, pH 7.4, with 0.09 % sodium azide

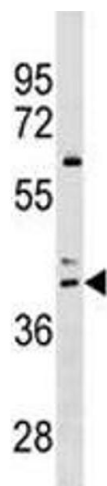
Preservative: Sodium azide

Precaution of Use: This product contains Sodium azide: a POISONOUS AND HAZARDOUS SUBSTANCE which should be handled by trained staff only.

Storage: -20 °C

Storage Comment: Aliquot the CCR4 antibody and store frozen at -20°C or colder. Avoid repeated freeze-thaw cycles.

Images



Western Blotting

Image 1. CCR4 antibody western blot analysis in HL-60 lysate



Western Blotting

Image 2. CCR4 antibody western blot analysis in HL-60 lysate