

Datasheet for ABIN3030496
anti-CCR6 antibody (C-Term)



[Go to Product page](#)

2 Images

Overview

Quantity:	100 µg
Target:	CCR6
Binding Specificity:	C-Term
Reactivity:	Human, Mouse, Rat
Host:	Rabbit
Clonality:	Polyclonal
Conjugate:	This CCR6 antibody is un-conjugated
Application:	Western Blotting (WB)

Product Details

Immunogen:	An amino acid sequence from the C-terminus of human CCR6 (RQTSETADNDNASSFTM) was used as the immunogen for this CCR6 antibody.
Isotype:	IgG
Purification:	Antigen affinity

Target Details

Target:	CCR6
Alternative Name:	CCR6 (CCR6 Products)
Background:	CCR6, also termed CKRL3, encodes a 369-amino acid polypeptide with greatest similarity to the family of alpha-chemokine-binding receptors. Unlike most chemokine receptor genes, it is encoded by more than 1 exon. Weakly expressed as a 4-kb transcript in spleen, lymph nodes,

Target Details

peripheral blood lymphocytes and appendix, CCR6 gene is located at 6q27. As the receptor for MIP-3-alpha, its activation leads to phospholipase C-dependent intracellular Ca(2+) mobilization. Additionally, CCR6 are markedly upregulated in psoriasis.

UniProt: [P51684](#)

Pathways: [cAMP Metabolic Process](#)

Application Details

Application Notes: The stated application concentrations are suggested starting amounts. Titration of the CCR6 antibody may be required due to differences in protocols and secondary/substrate sensitivity.\. Western blot: 0.5-1 µg/mL

Restrictions: For Research Use only

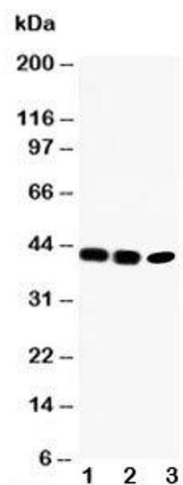
Handling

Buffer: 0.5 mg/mL if reconstituted with 0.2 mL sterile DI water

Storage: -20 °C

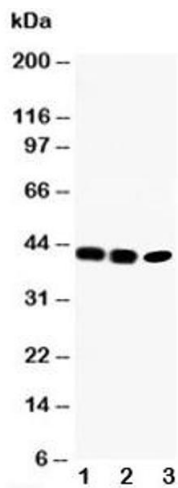
Storage Comment: After reconstitution, the CCR6 antibody can be stored for up to one month at 4°C. For long-term, aliquot and store at -20°C. Avoid repeated freezing and thawing.

Images



Western Blotting

Image 1. Western blot testing of CCR6 antibody and Lane 1: rat liver; 2: SW620; 3: CEM cell lysate



Western Blotting

Image 2. Western blot testing of CCR6 antibody and Lane 1: rat liver