

Datasheet for ABIN3030499  
**anti-CCR8 antibody (AA 290-317)**

## 3 Images

[Go to Product page](#)

## Overview

Quantity:	0.4 mL
Target:	CCR8
Binding Specificity:	AA 290-317
Reactivity:	Human
Host:	Rabbit
Clonality:	Polyclonal
Conjugate:	This CCR8 antibody is un-conjugated
Application:	Western Blotting (WB), ELISA, Flow Cytometry (FACS)

## Product Details

Immunogen:	A portion of amino acids 290-317 from the human protein was used as the immunogen for this CCR8 antibody.
Isotype:	Ig Fraction
Purification:	Antigen affinity purified

## Target Details

Target:	CCR8
Alternative Name:	CCR8 ( <a href="#">CCR8 Products</a> )
Background:	CCR8 encodes a member of the beta chemokine receptor family, which is predicted to be a seven transmembrane protein similar to G protein-coupled receptors. Chemokines and their receptors are important for the migration of various cell types into the inflammatory sites. This

## Target Details

receptor protein preferentially expresses in the thymus. I-309, thymus activation-regulated cytokine (TARC) and macrophage inflammatory protein-1 beta (MIP-1 beta) have been identified as ligands of this receptor. Studies of this receptor and its ligands suggested its role in regulation of monocyte chemotaxis and thymic cell apoptosis. More specifically, this receptor may contribute to the proper positioning of activated T cells within the antigenic challenge sites and specialized areas of lymphoid tissues. CCR8 is located at the chemokine receptor gene cluster region.

UniProt: [P51685](#)

## Application Details

Application Notes: Titration of the CCR8 antibody may be required due to differences in protocols and secondary/substrate sensitivity.\. Western blot: 1:1000,Flow Cytometry: 1:10-1:50

Restrictions: For Research Use only

## Handling

Format: Liquid

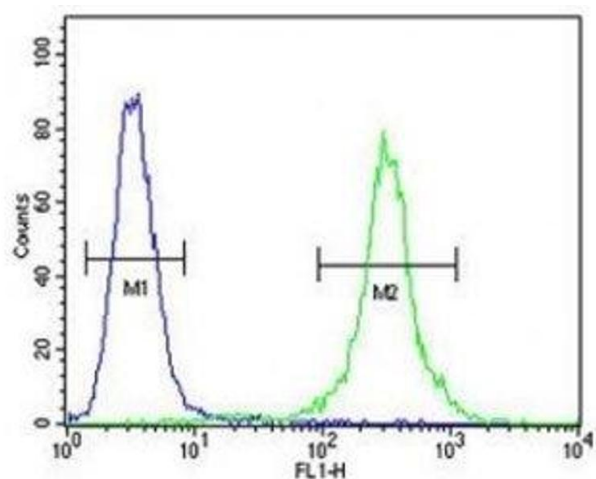
Buffer: In 1X PBS, pH 7.4, with 0.09 % sodium azide

Preservative: Sodium azide

Precaution of Use: This product contains Sodium azide: a POISONOUS AND HAZARDOUS SUBSTANCE which should be handled by trained staff only.

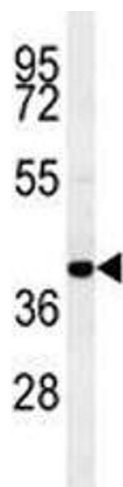
Storage: -20 °C

Storage Comment: Aliquot the CCR8 antibody and store frozen at -20°C or colder. Avoid repeated freeze-thaw cycles.



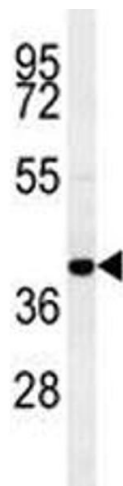
### Flow Cytometry

**Image 1.** CCR8 antibody flow cytometric analysis of MDA-MB435 cells (right histogram) compared to a negative control (left histogram). FITC-conjugated goat-anti-rabbit secondary Ab was used for the analysis.



### Western Blotting

**Image 2.** CCR8 antibody western blot analysis in MDA-MB435 lysate



### Western Blotting

**Image 3.** CCR8 antibody western blot analysis in MDA-MB435 lysate