

Datasheet for ABIN3030500
anti-CCR9 antibody (AA 306-334)[Go to Product page](#)

2 Images

Overview

Quantity:	0.4 mL
Target:	CCR9
Binding Specificity:	AA 306-334
Reactivity:	Human
Host:	Rabbit
Clonality:	Polyclonal
Conjugate:	This CCR9 antibody is un-conjugated
Application:	Western Blotting (WB), ELISA

Product Details

Immunogen:	A portion of amino acids 306-334 from the human protein was used as the immunogen for this CCR9 antibody.
Isotype:	Ig Fraction
Cross-Reactivity (Details):	Expected species reactivity: Mouse
Purification:	Antigen affinity purified

Target Details

Target:	CCR9
Alternative Name:	CCR9 (CCR9 Products)
Background:	The protein encoded by this gene is a member of the beta chemokine receptor family. It is

Target Details

predicted to be a seven transmembrane protein similar to G protein-coupled receptors. Chemokines and their receptors are key regulators of the thymocytes migration and maturation in normal and inflammation conditions. The specific ligand of this receptor is CCL25. It has been found that this gene is differentially expressed by T lymphocytes of small intestine and colon, suggested a role in the thymocytes recruitment and development that may permit functional specialization of immune responses in different segment of the gastrointestinal tract. This gene is mapped to the chemokine receptor gene cluster region. Two alternatively spliced transcript variants have been described.

UniProt: [P51686](#)

Application Details

Application Notes: Titration of the CCR9 antibody may be required due to differences in protocols and secondary/substrate sensitivity.\. Western blot: 1:1000

Restrictions: For Research Use only

Handling

Format: Liquid

Buffer: In 1X PBS, pH 7.4, with 0.09 % sodium azide

Preservative: Sodium azide

Precaution of Use: This product contains Sodium azide: a POISONOUS AND HAZARDOUS SUBSTANCE which should be handled by trained staff only.

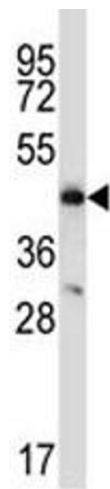
Storage: -20 °C

Storage Comment: Aliquot the CCR9 antibody and store frozen at -20°C or colder. Avoid repeated freeze-thaw cycles.



Western Blotting

Image 1. CCR9 antibody western blot analysis in MDA-MB435 lysate



Western Blotting

Image 2. CCR9 antibody western blot analysis in MDA-MB435 lysate