

Datasheet for ABIN3030503
anti-CXCL10 antibody (AA 79-98)[Go to Product page](#)

3 Images

Overview

Quantity:	100 µg
Target:	CXCL10
Binding Specificity:	AA 79-98
Reactivity:	Human
Host:	Rabbit
Clonality:	Polyclonal
Conjugate:	This CXCL10 antibody is un-conjugated
Application:	Western Blotting (WB), Immunohistochemistry (Paraffin-embedded Sections) (IHC (p))

Product Details

Immunogen:	Amino acids 79-98 (SKAIKNLLKAVSKERSKRSP-human) were used as the immunogen for this IP10 antibody.
Isotype:	IgG
Purification:	Antigen affinity

Target Details

Target:	CXCL10
Alternative Name:	IP10 (CXCL10 Products)
Background:	C-X-C motif chemokine 10(CXCL10), also known as Interferon gamma-induced protein 10 kDa (IP10) or small-inducible cytokine B10, is a protein that in humans is encoded by the CXCL10 gene. It is a small cytokine belonging to the CXC chemokine family. The gene for CXCL10 is

Target Details

located on human chromosome 4 in a cluster among several other CXC chemokines. Luster et al.(1987) reported the isolation of an interferon-inducible gene that encodes a 98-amino acid protein called IP10. The chemokine IFN-gamma-inducible protein 10, a CXC chemokine, and its receptor, CXCR3, were found to be overexpressed in lymph node cells of EAMG rats. IP10 inhibits bone marrow colony formation, has antitumor activity in vivo, is a chemoattractant for human monocytes and T cells, and promotes T cell adhesion to endothelial cells.

UniProt: [P02778](#)

Application Details

Application Notes: The stated application concentrations are suggested starting amounts. Titration of the IP10 antibody may be required due to differences in protocols and secondary/substrate sensitivity.\.
Western blot: 0.5-1 µg/mL,IHC (Paraffin): 0.5-1 µg/mL

Restrictions: For Research Use only

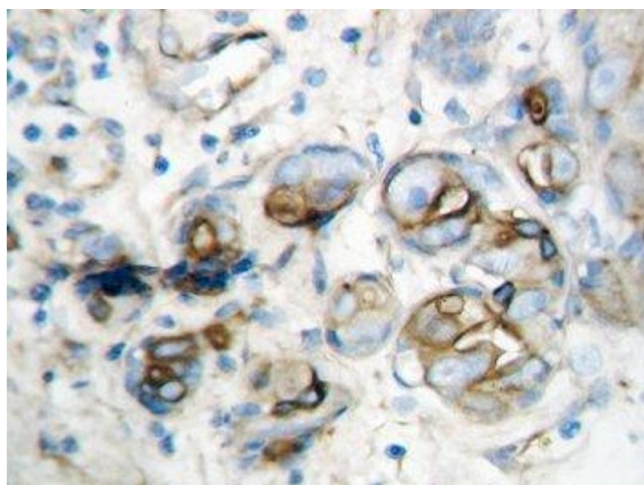
Handling

Buffer: 0.5 mg/mL if reconstituted with 0.2 mL sterile DI water

Storage: -20 °C

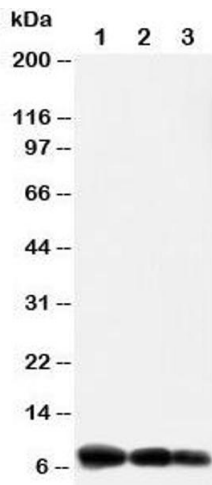
Storage Comment: After reconstitution, the IP10 antibody can be stored for up to one month at 4°C. For long-term, aliquot and store at -20°C. Avoid repeated freezing and thawing.

Images



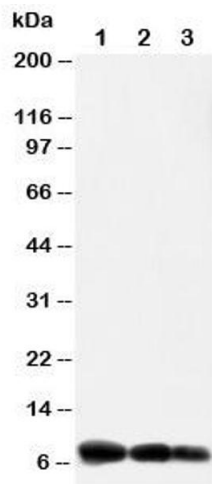
Immunohistochemistry

Image 1. IHC-P: IP10 antibody testing of human breast cancer tissue



Western Blotting

Image 2. Western blot testing of IP10 antibody and Lane 1: recombinant human protein 10ng; 2: 5ng; 3: 2.5ng



Western Blotting

Image 3. Western blot testing of IP10 antibody and Lane 1: recombinant human protein 10ng