

Datasheet for ABIN3030504
anti-CXCL12 antibody (AA 64-92)[Go to Product page](#)

3 Images

Overview

Quantity:	0.4 mL
Target:	CXCL12
Binding Specificity:	AA 64-92
Reactivity:	Human
Host:	Rabbit
Clonality:	Polyclonal
Conjugate:	This CXCL12 antibody is un-conjugated
Application:	Western Blotting (WB), Immunohistochemistry (IHC)

Product Details

Immunogen:	A portion of amino acids 64-92 from the human protein was used as the immunogen for this CXCL12 antibody.
Isotype:	Ig Fraction
Purification:	Antigen affinity purified

Target Details

Target:	CXCL12
Alternative Name:	CXCL12 (CXCL12 Products)
Background:	<p>This gene encodes a stromal cell-derived alpha chemokine member of the intercrine family.</p> <p>This gene product and its receptor CXCR4 can activate lymphocytes and have been implicated in the metastasis of some cancers such as breast cancer. Mutations in this gene are</p>

Target Details

associated with resistance to human immunodeficiency virus type 1 infections. Multiple transcript variants encoding different isoforms have been found for this gene.

UniProt: [P48061](#)

Pathways: [Regulation of Cell Size](#), [CXCR4-mediated Signaling Events](#), [Negative Regulation of intrinsic apoptotic Signaling](#)

Application Details

Application Notes: Titration of the CXCL12 antibody may be required due to differences in protocols and secondary/substrate sensitivity.\. Western blot: 1:1000,IHC (Paraffin): 1:10-1:50

Restrictions: For Research Use only

Handling

Format: Liquid

Buffer: In 1X PBS, pH 7.4, with 0.09 % sodium azide

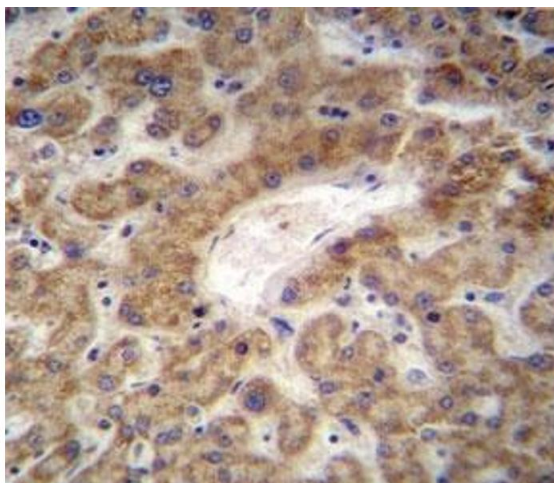
Preservative: Sodium azide

Precaution of Use: This product contains Sodium azide: a POISONOUS AND HAZARDOUS SUBSTANCE which should be handled by trained staff only.

Storage: -20 °C

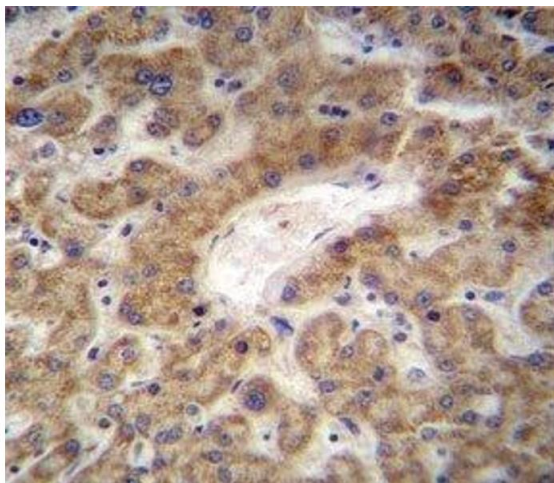
Storage Comment: Aliquot the CXCL12 antibody and store frozen at -20°C or colder. Avoid repeated freeze-thaw cycles.

Images



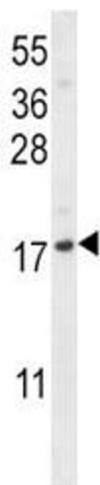
Immunohistochemistry

Image 1. CXCL12 antibody immunohistochemistry analysis in formalin fixed and paraffin embedded human liver tissue.



Immunohistochemistry

Image 2. CXCL12 antibody immunohistochemistry analysis in formalin fixed and paraffin embedded human liver tissue.



Western Blotting

Image 3. CXCL12 antibody western blot analysis in NCI-H292 lysate. Predicted molecular weight: 9-12 kDa.