

Datasheet for ABIN3030520  
**anti-CXCR7 antibody (AA 330-358)**[Go to Product page](#)

## 3 Images

## Overview

Quantity:	0.4 mL
Target:	CXCR7
Binding Specificity:	AA 330-358
Reactivity:	Human
Host:	Rabbit
Clonality:	Polyclonal
Conjugate:	This CXCR7 antibody is un-conjugated
Application:	Western Blotting (WB), ELISA, Immunohistochemistry (IHC)

## Product Details

Immunogen:	A portion of amino acids 330-358 from the human protein was used as the immunogen for this CXCR7 antibody.
Isotype:	Ig Fraction
Cross-Reactivity (Details):	Expected species reactivity: Mouse, Rat
Purification:	Antigen affinity purified

## Target Details

Target:	CXCR7
Alternative Name:	CXCR7 ( <a href="#">CXCR7 Products</a> )
Background:	CXCR7 is a member of the G-protein coupled receptor family. Although this protein was earlier

## Target Details

thought to be a receptor for vasoactive intestinal peptide (VIP), it is now considered to be an orphan receptor, in that its endogenous ligand has not been identified. The protein is also a coreceptor for human immunodeficiency viruses (HIV).

UniProt: [P25106](#)

Pathways: [Myometrial Relaxation and Contraction](#), [Negative Regulation of intrinsic apoptotic Signaling](#)

## Application Details

Application Notes: Titration of the CXCR7 antibody may be required due to differences in protocols and secondary/substrate sensitivity.\. Western blot: 1:1000,IHC (Paraffin): 1:50-1:100

Restrictions: For Research Use only

## Handling

Format: Liquid

Buffer: In 1X PBS, pH 7.4, with 0.09 % sodium azide

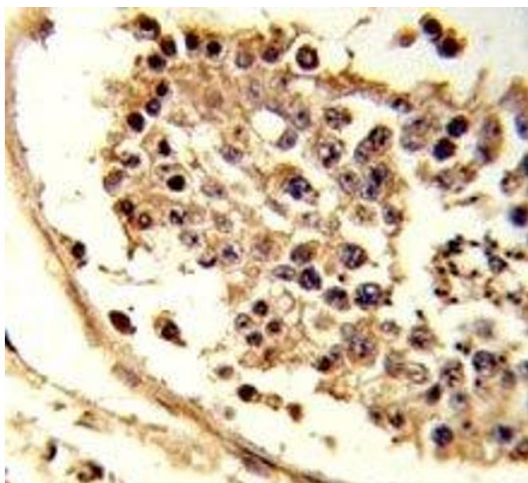
Preservative: Sodium azide

Precaution of Use: This product contains Sodium azide: a POISONOUS AND HAZARDOUS SUBSTANCE which should be handled by trained staff only.

Storage: -20 °C

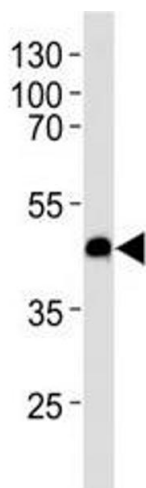
Storage Comment: Aliquot the CXCR7 antibody and store frozen at -20°C or colder. Avoid repeated freeze-thaw cycles.

## Images



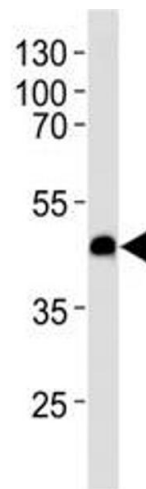
### Immunohistochemistry

**Image 1.** IHC analysis of FFPE human testis tissue stained with CXCR7 antibody



#### Western Blotting

**Image 2.** Western blot analysis of lysate from U-251 MG cell line using CXCR7 antibody at 1:1000 for each lane. Predicted molecular weight ~43 kDa.



#### Western Blotting

**Image 3.** Western blot analysis of lysate from U-251 MG cell line using CXCR7 antibody at 1:1000 for each lane. Predicted molecular weight ~43 kDa.