

Datasheet for ABIN3030523  
**anti-CX3CR1 antibody (AA 40-69)**[Go to Product page](#)

## 2 Images

## Overview

Quantity:	0.4 mL
Target:	CX3CR1
Binding Specificity:	AA 40-69
Reactivity:	Human
Host:	Rabbit
Clonality:	Polyclonal
Conjugate:	This CX3CR1 antibody is un-conjugated
Application:	Western Blotting (WB), ELISA

## Product Details

Immunogen:	A portion of amino acids 40-69 from the human protein was used as the immunogen for this CX3CR1 antibody.
Isotype:	Ig Fraction
Purification:	Antigen affinity purified

## Target Details

Target:	CX3CR1
Alternative Name:	CX3CR1 ( <a href="#">CX3CR1 Products</a> )
Background:	Fractalkine is a transmembrane protein and chemokine involved in the adhesion and migration of leukocytes. The protein encoded by this gene is a receptor for fractalkine. The encoded protein also is a coreceptor for HIV-1, and some variations in this gene lead to increased

## Target Details

susceptibility to HIV-1 infection and rapid progression to AIDS. Four transcript variants encoding two different isoforms have been found for this gene. [provided by RefSeq].

UniProt: [P49238](#)

Pathways: [Cellular Response to Molecule of Bacterial Origin](#)

## Application Details

Application Notes: Titration of the CX3CR1 antibody may be required due to differences in protocols and secondary/substrate sensitivity.\. Western blot: 1:1000

Restrictions: For Research Use only

## Handling

Format: Liquid

Buffer: In 1X PBS, pH 7.4, with 0.09 % sodium azide

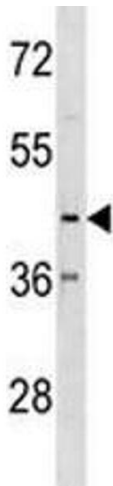
Preservative: Sodium azide

Precaution of Use: This product contains Sodium azide: a POISONOUS AND HAZARDOUS SUBSTANCE which should be handled by trained staff only.

Storage: -20 °C

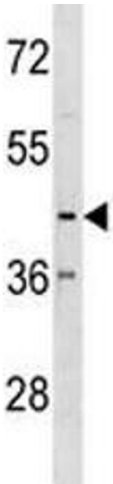
Storage Comment: Aliquot the CX3CR1 antibody and store frozen at -20°C or colder. Avoid repeated freeze-thaw cycles.

## Images



### Western Blotting

**Image 1.** CX3CR1 antibody western blot analysis in K562 lysate



Western Blotting

**Image 2.** CX3CR1 antibody western blot analysis in K562 lysate