

Datasheet for ABIN3030535
anti-Claudin 2 antibody (AA 135-164)[Go to Product page](#)

3 Images

Overview

Quantity:	0.4 mL
Target:	Claudin 2 (CLDN2)
Binding Specificity:	AA 135-164
Reactivity:	Human
Host:	Rabbit
Clonality:	Polyclonal
Conjugate:	This Claudin 2 antibody is un-conjugated
Application:	Western Blotting (WB), ELISA, Immunohistochemistry (IHC)

Product Details

Immunogen:	A portion of amino acids 135-164 from the human protein was used as the immunogen for this Claudin 2 antibody.
Isotype:	Ig Fraction
Cross-Reactivity (Details):	Expected species reactivity: Mouse, Bovine
Purification:	Antigen affinity purified

Target Details

Target:	Claudin 2 (CLDN2)
Abstract:	CLDN2 Products
Background:	Claudin-2 is expressed in cation-leaky epithelia such as that of the kidney proximal tubule. Mice

Target Details

that are deficient in the protein have reduced reabsorption of Na⁺ in the proximal tubule, consistent with a role in paracellular transport. Similar results have been obtained with cultured cells, as overexpression in CLDN2 lacking cells leads to increase of permeability for small cations. Furthermore, CLDN2 has been shown to form paracellular channels for water. [Wiki]

UniProt: [P57739](#)

Pathways: [Hepatitis C](#)

Application Details

Application Notes: Titration of the Claudin 2 antibody may be required due to differences in protocols and secondary/substrate sensitivity.\. Western blot: 1:1000,IHC (Paraffin): 1:10-1:50

Restrictions: For Research Use only

Handling

Format: Liquid

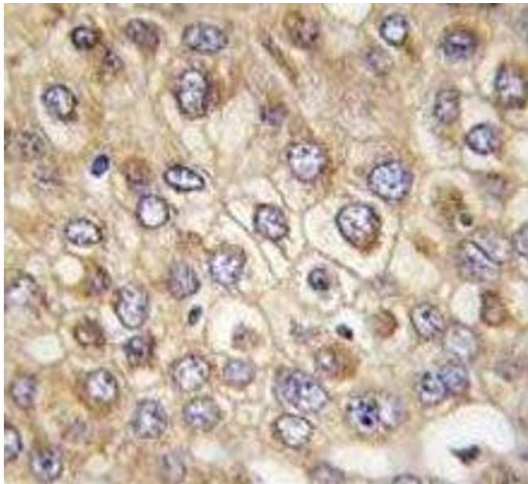
Buffer: In 1X PBS, pH 7.4, with 0.09 % sodium azide

Preservative: Sodium azide

Precaution of Use: This product contains Sodium azide: a POISONOUS AND HAZARDOUS SUBSTANCE which should be handled by trained staff only.

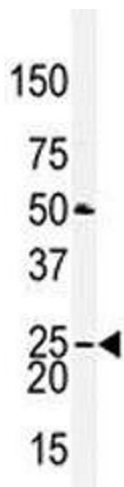
Storage: -20 °C

Storage Comment: Aliquot the Claudin 2 antibody and store frozen at -20°C or colder. Avoid repeated freeze-thaw cycles.



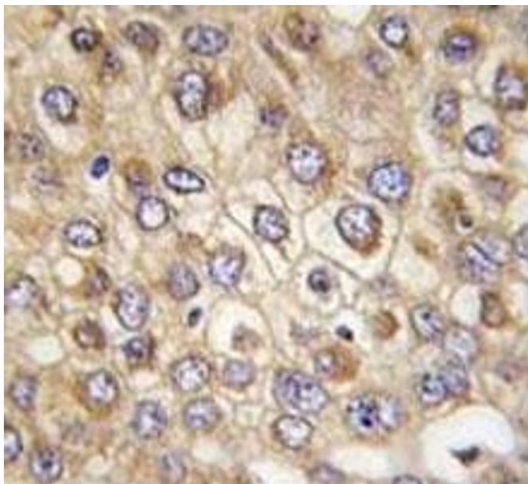
Immunohistochemistry

Image 1. IHC analysis of FFPE human hepatocarcinoma tissue stained with Claudin 2 antibody



Western Blotting

Image 2. Western blot analysis of CLDN2 / Claudin 2 antibody and mouse heart tissue lysate



Immunohistochemistry

Image 3. IHC analysis of FFPE human hepatocarcinoma tissue stained with Claudin 2 antibody