

Datasheet for ABIN3030538  
**anti-CD1e antibody (AA 184-212)**

## 7 Images

[Go to Product page](#)

## Overview

Quantity:	0.4 mL
Target:	CD1e
Binding Specificity:	AA 184-212
Reactivity:	Human
Host:	Rabbit
Clonality:	Polyclonal
Conjugate:	This CD1e antibody is un-conjugated
Application:	Western Blotting (WB), ELISA, Flow Cytometry (FACS), Immunohistochemistry (IHC), Immunofluorescence (IF)

## Product Details

Immunogen:	A portion of amino acids 184-212 from the human protein was used as the immunogen for this CD1e antibody.
Isotype:	Ig Fraction
Purification:	Antigen affinity purified

## Target Details

Target:	CD1e
Alternative Name:	CD1e ( <a href="#">CD1e Products</a> )
Background:	CD1E encodes a member of the CD1 family of transmembrane glycoproteins, which are structurally related to the major histocompatibility complex (MHC) proteins and form

## Target Details

heterodimers with beta-2-microglobulin. The CD1 proteins mediate the presentation of primarily lipid and glycolipid antigens of self or microbial origin to T cells. The human genome contains five CD1 family genes organized in a cluster on chromosome 1. The CD1 family members are thought to differ in their cellular localization and specificity for particular lipid ligands. The protein encoded by this gene localizes within Golgi compartments, endosomes, and lysosomes, and is cleaved into a stable soluble form. The soluble form is required for the intracellular processing of some glycolipids into a form that can be presented by other CD1 family members.

UniProt: [P15812](#)

## Application Details

Application Notes: Titration of the CD1e antibody may be required due to differences in protocols and secondary/substrate sensitivity.\. Western blot: 1:1000,IHC (Paraffin): 1:50-1:100,Flow Cytometry: 1:10-1:50,Immunofluorescence: 1:10-1:50

Restrictions: For Research Use only

## Handling

Format: Liquid

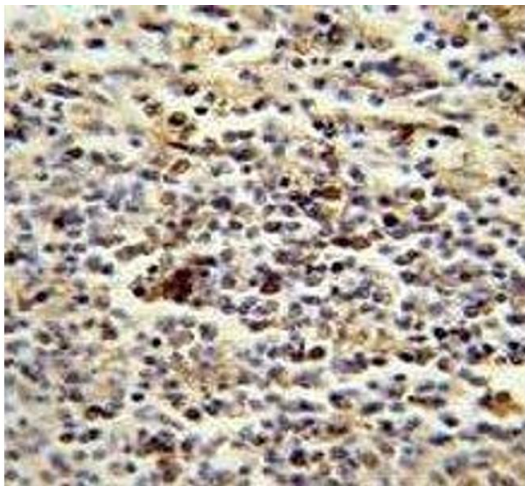
Buffer: In 1X PBS, pH 7.4, with 0.09 % sodium azide

Preservative: Sodium azide

Precaution of Use: This product contains Sodium azide: a POISONOUS AND HAZARDOUS SUBSTANCE which should be handled by trained staff only.

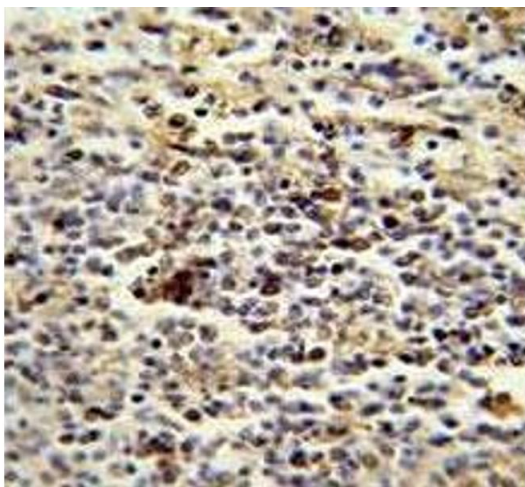
Storage: -20 °C

Storage Comment: Aliquot the CD1e antibody and store frozen at -20°C or colder. Avoid repeated freeze-thaw cycles.



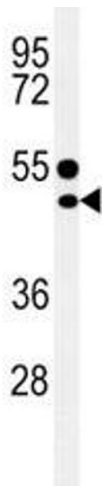
#### Immunohistochemistry

**Image 1.** CD1e antibody immunohistochemistry analysis in formalin fixed and paraffin embedded human spleen.



#### Immunohistochemistry

**Image 2.** CD1e antibody immunohistochemistry analysis in formalin fixed and paraffin embedded human spleen.



#### Western Blotting

**Image 3.** CD1e antibody western blot analysis in MDA-MB435 lysate

Please check the [product details page](#) for more images. Overall 7 images are available for ABIN3030538.