

Datasheet for ABIN3030540
anti-CARM1 antibody (AA 346-377)

5 Images

[Go to Product page](#)

Overview

Quantity:	0.4 mL
Target:	CARM1
Binding Specificity:	AA 346-377
Reactivity:	Human
Host:	Rabbit
Clonality:	Polyclonal
Conjugate:	This CARM1 antibody is un-conjugated
Application:	Western Blotting (WB), ELISA, Immunohistochemistry (IHC), Flow Cytometry (FACS)

Product Details

Immunogen:	A portion of amino acids 346-377 from the human protein was used as the immunogen for this PRMT4 antibody.
Isotype:	Ig Fraction
Cross-Reactivity (Details):	Expected species reactivity: Mouse, Rat
Purification:	Antigen affinity purified

Target Details

Target:	CARM1
Alternative Name:	PRMT4 (CARM1 Products)
Background:	Protein arginine N-methyltransferases, such as CARM1, catalyze the transfer of a methyl group

Target Details

from S-adenosyl-L-methionine to the side chain nitrogens of arginine residues within proteins to form methylated arginine derivatives and S-adenosyl-L-homocysteine. Protein arginine methylation has been implicated in signal transduction, metabolism of nascent pre-RNA, and transcriptional activation (Frankel et al., 2002 [PubMed 11724789]).

UniProt: [Q86X55](#)

Pathways: [Intracellular Steroid Hormone Receptor Signaling Pathway](#), [Regulation of Intracellular Steroid Hormone Receptor Signaling](#), [Regulation of Lipid Metabolism by PPARalpha](#), [Regulation of Muscle Cell Differentiation](#), [Skeletal Muscle Fiber Development](#), [Positive Regulation of fat Cell Differentiation](#)

Application Details

Application Notes: Titration of the PRMT4 antibody may be required due to differences in protocols and secondary/substrate sensitivity.\. Western blot: 1:1000,IHC (Paraffin): 1:50-1:100,Flow Cytometry: 1:10-1:50

Restrictions: For Research Use only

Handling

Format: Liquid

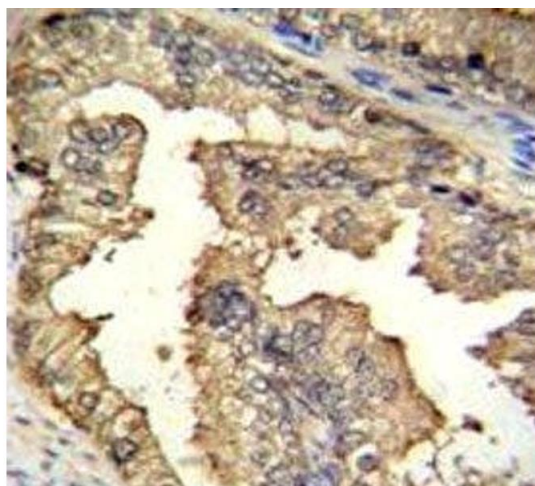
Buffer: In 1X PBS, pH 7.4, with 0.09 % sodium azide

Preservative: Sodium azide

Precaution of Use: This product contains Sodium azide: a POISONOUS AND HAZARDOUS SUBSTANCE which should be handled by trained staff only.

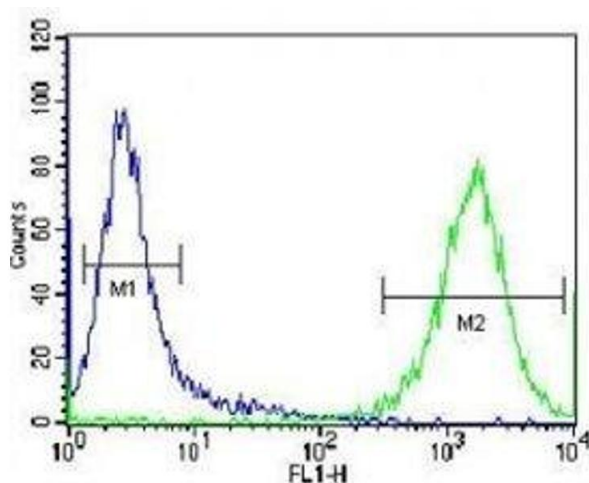
Storage: -20 °C

Storage Comment: Aliquot the PRMT4 antibody and store frozen at -20°C or colder. Avoid repeated freeze-thaw cycles.



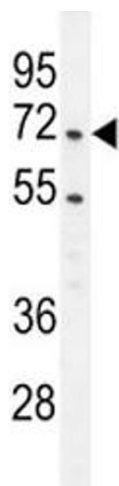
Immunohistochemistry

Image 1. IHC testing of PRMT4 antibody and FFPE human prostate carcinoma.



Flow Cytometry

Image 2. PRMT4 antibody flow cytometric analysis of Jurkat cells (green) compared to a negative control (blue). FITC-conjugated donkey-anti-rabbit secondary Ab was used for the analysis.



Western Blotting

Image 3. PRMT4 antibody western blot analysis in Jurkat lysate.

Please check the [product details page](#) for more images. Overall 5 images are available for ABIN3030540.