



[Go to Product page](#)

Datasheet for ABIN3030546  
**anti-COL4A1 antibody (C-Term)**

2 Images

Overview

Quantity:	100 µg
Target:	COL4A1
Binding Specificity:	C-Term
Reactivity:	Human, Mouse, Rat
Host:	Rabbit
Clonality:	Polyclonal
Conjugate:	This COL4A1 antibody is un-conjugated
Application:	Western Blotting (WB)

Product Details

Immunogen:	An amino acid sequence from the C-terminus of human Collagen IV COL4A1 (ELRTHVSRQVCMRRT) was used as the immunogen for this Collagen IV antibody (100% homologous in human, mouse and rat).
Isotype:	IgG
Purification:	Antigen affinity

Target Details

Target:	COL4A1
Alternative Name:	Collagen IV (COL4A1) ( <a href="#">COL4A1 Products</a> )
Background:	Collagen alpha-1(IV) chain is a protein that in humans is encoded by the COL4A1 gene. Type IV collagen is the major structural component of glomerular basement membranes(GBM),

## Target Details

forming a 'chicken-wire' meshwork together with laminins, proteoglycans and entactin/nidogen. Like the other members of the type IV collagen gene family, this gene is organized in a head-to-head conformation with another type IV collagen gene so that each gene pair shares a common promoter. Mutations in COL4A1 exons 24 and 25 are associated with HANAC (autosomal dominant hereditary angiopathy with nephropathy, aneurysms, and muscle cramps).

UniProt: [P02462](#)

Pathways: [Skeletal Muscle Fiber Development](#), [Growth Factor Binding](#)

## Application Details

Application Notes: The stated application concentrations are suggested starting amounts. Titration of the Collagen IV antibody may be required due to differences in protocols and secondary/substrate sensitivity. Western blot: 0.5-1 µg/mL

Restrictions: For Research Use only

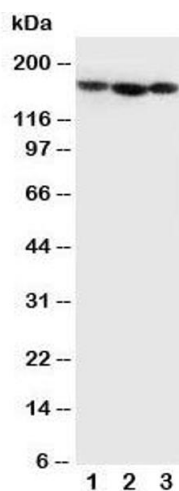
## Handling

Buffer: 0.5 mg/mL if reconstituted with 0.2 mL sterile DI water

Storage: -20 °C

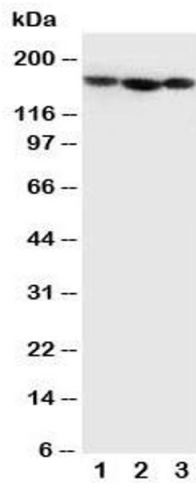
Storage Comment: After reconstitution, the Collagen IV antibody can be stored for up to one month at 4°C. For long-term, aliquot and store at -20°C. Avoid repeated freezing and thawing.

## Images



### Western Blotting

**Image 1.** Western blot testing of Collagen IV antibody and  
Lane 1: MCF-7; 2: SCG; 3: SW620 cell lysate



### Western Blotting

**Image 2.** Western blot testing of Collagen IV antibody and  
Lane 1: MCF-7