

Datasheet for ABIN3030548

anti-COL1A1 antibody (AA 1077-1106)**3** Images[Go to Product page](#)

Overview

Quantity:	0.4 mL
Target:	COL1A1
Binding Specificity:	AA 1077-1106
Reactivity:	Human, Mouse
Host:	Rabbit
Clonality:	Polyclonal
Conjugate:	This COL1A1 antibody is un-conjugated
Application:	Western Blotting (WB), Immunohistochemistry (IHC), ELISA

Product Details

Immunogen:	A portion of amino acids 1077-1106 from the human protein was used as the immunogen for this COL1A1 antibody.
Isotype:	Ig Fraction
Cross-Reactivity (Details):	Expected species reactivity: Rat, Bovine, Chicken
Purification:	Antigen affinity purified

Target Details

Target:	COL1A1
Alternative Name:	COL1A1 (COL1A1 Products)
Background:	This gene encodes the pro-alpha1 chains of type I collagen whose triple helix comprises two

Target Details

alpha1 chains and one alpha2 chain. Type I is a fibril-forming collagen found in most connective tissues and is abundant in bone, cornea, dermis and tendon. Mutations in this gene are associated with osteogenesis imperfecta types I-IV, Ehlers-Danlos syndrome type VIIA, Ehlers-Danlos syndrome Classical type, Caffey Disease and idiopathic osteoporosis. Reciprocal translocations between chromosomes 17 and 22, where this gene and the gene for platelet-derived growth factor beta are located, are associated with a particular type of skin tumor called dermatofibrosarcoma protuberans, resulting from unregulated expression of the growth factor. Two transcripts, resulting from the use of alternate polyadenylation signals, have been identified for this gene. [provided by R. Dalgleish].

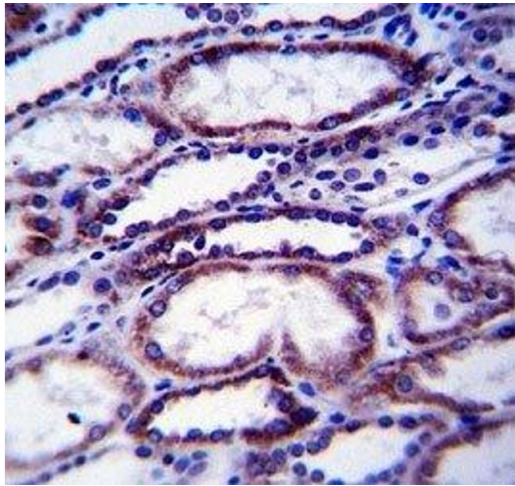
UniProt:	P02452
Pathways:	Sensory Perception of Sound , Autophagy , Growth Factor Binding

Application Details

Application Notes:	Titration of the COL1A1 antibody may be required due to differences in protocols and secondary/substrate sensitivity.\. Western blot: 1:1000,IHC (Paraffin): 1:10-1:50
Restrictions:	For Research Use only

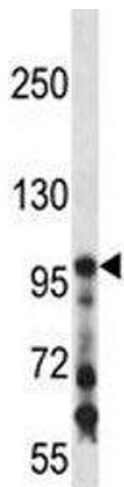
Handling

Format:	Liquid
Buffer:	In 1X PBS, pH 7.4, with 0.09 % sodium azide
Preservative:	Sodium azide
Precaution of Use:	This product contains Sodium azide: a POISONOUS AND HAZARDOUS SUBSTANCE which should be handled by trained staff only.
Storage:	-20 °C
Storage Comment:	Aliquot the COL1A1 antibody and store frozen at -20°C or colder. Avoid repeated freeze-thaw cycles.



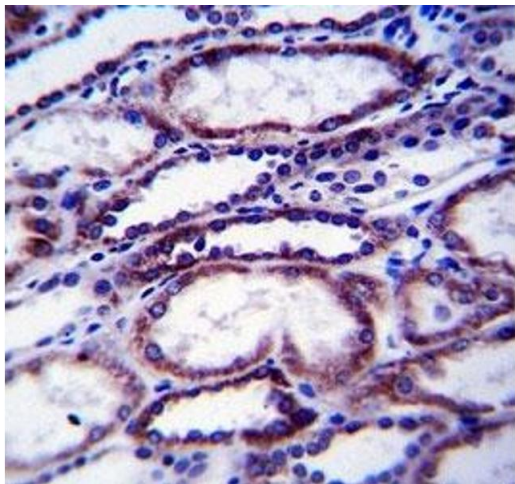
Immunohistochemistry

Image 1. COL1A1 antibody immunohistochemistry analysis in formalin fixed and paraffin embedded human kidney tissue.



Western Blotting

Image 2. COL1A1 antibody western blot analysis in mouse kidney tissue lysate



Immunohistochemistry

Image 3. COL1A1 antibody immunohistochemistry analysis in formalin fixed and paraffin embedded human kidney tissue.