

Datasheet for ABIN3030563
anti-CFP antibody (AA 197-223)[Go to Product page](#)

3 Images

Overview

Quantity:	0.4 mL
Target:	CFP
Binding Specificity:	AA 197-223
Reactivity:	Human
Host:	Rabbit
Clonality:	Polyclonal
Conjugate:	This CFP antibody is un-conjugated
Application:	Western Blotting (WB), ELISA, Flow Cytometry (FACS)

Product Details

Immunogen:	A portion of amino acids 197-223 from the human protein was used as the immunogen for this CFP antibody.
Isotype:	Ig Fraction
Purification:	Antigen affinity purified

Target Details

Target:	CFP
Alternative Name:	CFP (CFP Products)
Background:	This gene encodes a plasma glycoprotein that positively regulates the alternative complement pathway of the innate immune system. This protein binds to many microbial surfaces and apoptotic cells and stabilizes the C3- and C5-convertase enzyme complexes in a feedback loop

Target Details

that ultimately leads to formation of the membrane attack complex and lysis of the target cell. Mutations in this gene result in two forms of properdin deficiency, which results in high susceptibility to meningococcal infections.

UniProt:	P27918
Pathways:	Complement System

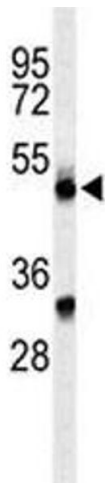
Application Details

Application Notes:	Titration of the CFP antibody may be required due to differences in protocols and secondary/substrate sensitivity.\. Western blot: 1:1000,Flow Cytometry: 1:10-1:50
Restrictions:	For Research Use only

Handling

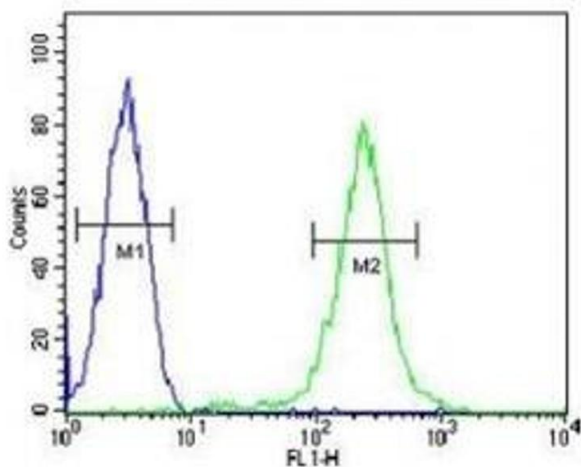
Format:	Liquid
Buffer:	In 1X PBS, pH 7.4, with 0.09 % sodium azide
Preservative:	Sodium azide
Precaution of Use:	This product contains Sodium azide: a POISONOUS AND HAZARDOUS SUBSTANCE which should be handled by trained staff only.
Storage:	-20 °C
Storage Comment:	Aliquot the CFP antibody and store frozen at -20°C or colder. Avoid repeated freeze-thaw cycles.

Images



Western Blotting

Image 1. Western blot analysis of CFP antibody and CEM lysate.



Flow Cytometry

Image 2. CFP antibody flow cytometric analysis of CEM cells (green) compared to a negative control (blue). FITC-conjugated goat-anti-rabbit secondary Ab was used for the analysis.



Western Blotting

Image 3. Western blot analysis of CFP antibody and CEM lysate.