

Datasheet for ABIN3030576

anti-Cullin 1 antibody (N-Term)[Go to Product page](#)**2** Images

Overview

Quantity:	100 µg
Target:	Cullin 1 (CUL1)
Binding Specificity:	N-Term
Reactivity:	Human, Mouse, Rat
Host:	Rabbit
Clonality:	Polyclonal
Conjugate:	This Cullin 1 antibody is un-conjugated
Application:	Western Blotting (WB), Immunohistochemistry (Paraffin-embedded Sections) (IHC (p))

Product Details

Immunogen:	An amino acid sequence from the N-terminus of human Cullin 1 (RQSMASRYMELYTHVYNY) was used as the immunogen for this CUL1 antibody (100% homologous in human, mouse and rat).
Isotype:	IgG
Purification:	Antigen affinity

Target Details

Target:	Cullin 1 (CUL1)
Alternative Name:	CUL1 (CUL1 Products)
Background:	Cullin 1 is a human protein and gene from cullin family. This protein plays an important role in protein degradation and protein ubiquitination. This is an essential component of the

Target Details

SCF(SKP1-CUL1-F-box protein) E3 ubiquitin ligase complex, which mediates the ubiquitination of proteins involved in cell cycle progression, signal transduction and transcription. Human CUL1, but not the other closely related cullins 2, 3, 4A, and 5, selectively interacts with human SKP1.

UniProt: [Q13616](#)

Pathways: [Cell Division Cycle](#), [Hedgehog Signaling](#), [Mitotic G1-G1/S Phases](#), [Regulation of Cell Size](#)

Application Details

Application Notes: The stated application concentrations are suggested starting amounts. Titration of the CUL1 antibody may be required due to differences in protocols and secondary/substrate sensitivity.\.
Western blot: 0.5-1 µg/mL,IHC (Paraffin): 0.5-1 µg/mL

Restrictions: For Research Use only

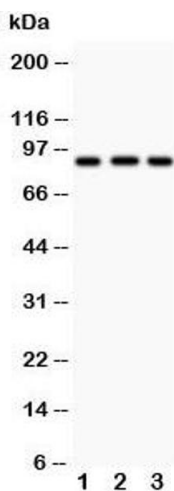
Handling

Buffer: 0.5 mg/mL if reconstituted with 0.2 mL sterile DI water

Storage: -20 °C

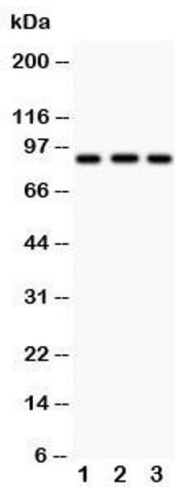
Storage Comment: After reconstitution, the CUL1 antibody can be stored for up to one month at 4°C. For long-term, aliquot and store at -20°C. Avoid repeated freezing and thawing.

Images



Western Blotting

Image 1. Western blot testing of CUL1 antibody and Lane 1: MM453; 2: HT1080; 3: SMMC-7721; Predicted size: 90 KD; Observed size: 90 KD



Western Blotting

Image 2. Western blot testing of CUL1 antibody and Lane 1: MM453