

Datasheet for ABIN3030580
anti-CUX1 antibody (AA 1347-1374)[Go to Product page](#)

5 Images

Overview

Quantity:	0.4 mL
Target:	CUX1
Binding Specificity:	AA 1347-1374
Reactivity:	Human
Host:	Rabbit
Clonality:	Polyclonal
Conjugate:	This CUX1 antibody is un-conjugated
Application:	Western Blotting (WB), ELISA, Immunofluorescence (IF), Immunohistochemistry (IHC)

Product Details

Immunogen:	A portion of amino acids 1347-1374 from the human protein was used as the immunogen for this CUX1 antibody.
Isotype:	Ig Fraction
Purification:	Antigen affinity purified

Target Details

Target:	CUX1
Alternative Name:	CUX1 (CUX1 Products)
Background:	CUX1 likely has a broad role in mammalian development as a repressor of developmentally regulated gene expression. May act by preventing binding of positively-activating CCAAT factors to promoters. Component of nf-munr repressor, binds to the matrix attachment regions (MARs)

Target Details

(5' and 3') of the immunoglobulin heavy chain enhancer. Represses T-cell receptor (TCR) beta enhancer function by binding to MARbeta, an ATC-rich DNA sequence located upstream of the TCR beta enhancer. Binds to the TH enhancer, may require the basic helix-loop-helix protein TCF4 as a coactivator (By similarity). [UniProt]

UniProt: [P39880](#)

Pathways: [Cellular Glucan Metabolic Process](#)

Application Details

Application Notes: Titration of the CUX1 antibody may be required due to differences in protocols and secondary/substrate sensitivity.\. Western blot: 1:1000,IHC (Paraffin): 1:50-1:100,Immunofluorescence: 1:10-1:50

Restrictions: For Research Use only

Handling

Format: Liquid

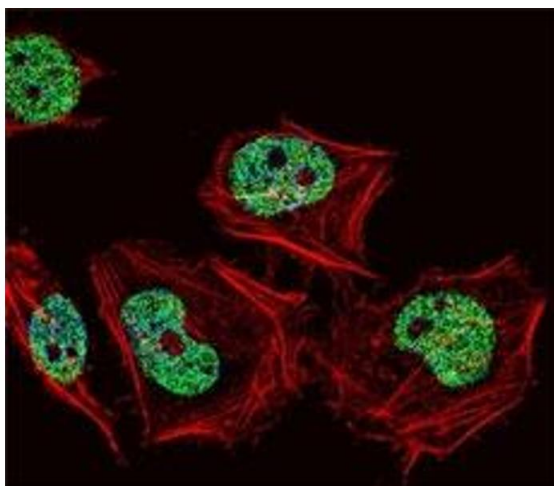
Buffer: In 1X PBS, pH 7.4, with 0.09 % sodium azide

Preservative: Sodium azide

Precaution of Use: This product contains Sodium azide: a POISONOUS AND HAZARDOUS SUBSTANCE which should be handled by trained staff only.

Storage: -20 °C

Storage Comment: Aliquot the CUX1 antibody and store frozen at -20°C or colder. Avoid repeated freeze-thaw cycles.



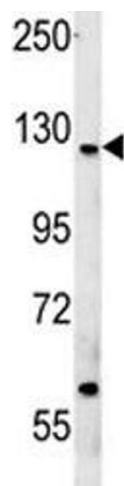
Immunofluorescence

Image 1. Fluorescent confocal image of HeLa cell stained with CUX1 antibody at 1:25. CUX1 immunoreactivity is localized to the nucleus.



Immunohistochemistry

Image 2. CUX1 antibody immunohistochemistry analysis in formalin fixed and paraffin embedded human kidney tissue.



Western Blotting

Image 3. CUX1 antibody western blot analysis in MCF-7 lysate

Please check the [product details page](#) for more images. Overall 5 images are available for ABIN3030580.