

Datasheet for ABIN3030582

anti-Cyclin A antibody (AA 358-389)**3** Images[Go to Product page](#)

Overview

Quantity:	0.4 mL
Target:	Cyclin A (CCNA2)
Binding Specificity:	AA 358-389
Reactivity:	Human
Host:	Rabbit
Clonality:	Polyclonal
Conjugate:	This Cyclin A antibody is un-conjugated
Application:	Western Blotting (WB), Immunohistochemistry (IHC), ELISA

Product Details

Immunogen:	A portion of amino acids 358-389 from the human protein was used as the immunogen for this Cyclin A2 antibody.
Isotype:	Ig Fraction
Purification:	Purified

Target Details

Target:	Cyclin A (CCNA2)
Abstract:	CCNA2 Products
Background:	CCNA2 belongs to the highly conserved cyclin family, whose members are characterized by a dramatic periodicity in protein abundance through the cell cycle. Cyclins function as regulators of CDK kinases. Different cyclins exhibit distinct expression and degradation patterns which

Target Details

contribute to the temporal coordination of each mitotic event. In contrast to cyclin A1, which is present only in germ cells, this cyclin is expressed in all tissues tested. This cyclin binds and activates CDC2 or CDK2 kinases, and thus promotes both cell cycle G1/S and G2/M transitions.

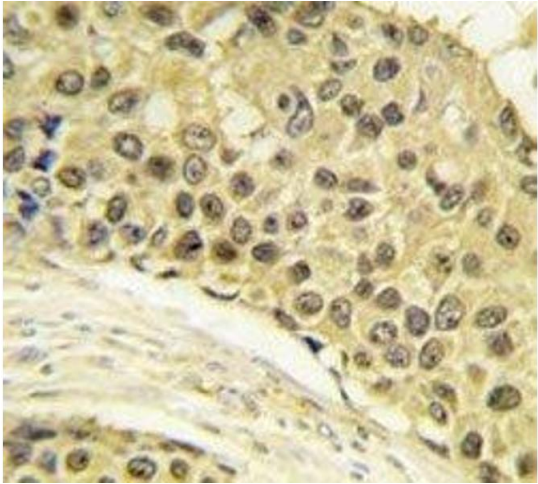
UniProt:	P20248
Pathways:	PI3K-Akt Signaling , Cell Division Cycle , AMPK Signaling , Mitotic G1-G1/S Phases , DNA Replication , M Phase , Synthesis of DNA

Application Details

Application Notes:	Titration of the Cyclin A2 antibody may be required due to differences in protocols and secondary/substrate sensitivity.\. Western blot: 1:1000,IHC (Paraffin): 1:10-1:50
Restrictions:	For Research Use only

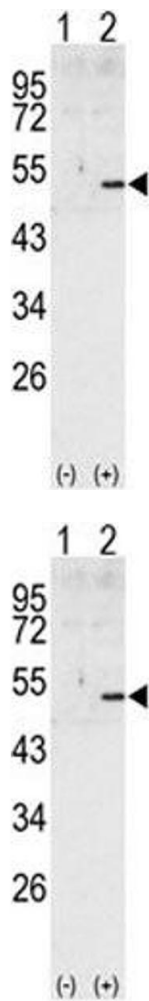
Handling

Format:	Liquid
Buffer:	In 1X PBS, pH 7.4, with 0.09 % sodium azide
Preservative:	Sodium azide
Precaution of Use:	This product contains Sodium azide: a POISONOUS AND HAZARDOUS SUBSTANCE which should be handled by trained staff only.
Storage:	-20 °C
Storage Comment:	Aliquot the Cyclin A2 antibody and store frozen at -20°C or colder. Avoid repeated freeze-thaw cycles.



Immunohistochemistry

Image 1. IHC analysis of FFPE human breast carcinoma tissue stained with Cyclin A2 antibody



Western Blotting

Image 2. Western blot analysis of Cyclin A2 antibody and 293 cell lysate (2 ug/lane) either nontransfected (Lane 1) or transiently transfected with the human gene (2). Predicted molecular weight ~50 kDa

Western Blotting

Image 3. Western blot analysis of Cyclin A2 antibody and 293 cell lysate (2 ug/lane) either nontransfected (Lane 1) or transiently transfected with the human gene (2). Predicted molecular weight ~50 kDa