

Datasheet for ABIN3030583

anti-Cyclin B1 antibody (AA 1-433)[Go to Product page](#)**4** Images

Overview

Quantity:	100 µg
Target:	Cyclin B1 (CCNB1)
Binding Specificity:	AA 1-433
Reactivity:	Human
Host:	Rabbit
Clonality:	Polyclonal
Conjugate:	This Cyclin B1 antibody is un-conjugated
Application:	Western Blotting (WB), Flow Cytometry (FACS)

Product Details

Immunogen:	Human partial recombinant protein (AA 1-433) was used as the immunogen for this Cyclin B1 antibody.
Isotype:	IgG
Purification:	Antigen affinity

Target Details

Target:	Cyclin B1 (CCNB1)
Alternative Name:	Cyclin B1 (CCNB1 Products)
Background:	Cyclin B1 is a protein that in humans is encoded by the CCNB1 gene, and it is mapped to 5q13.2. It is a regulatory protein involved in mitosis. The gene product complexes with< a href=../search_result.php?search_txt=cdc2>p34(Cdc2)to form the maturation-promoting factor

Target Details

(MPF). Two alternative transcripts have been found, a constitutively expressed transcript and a cell cycle-regulated transcript, that is expressed predominantly during G2/M phase. The different transcripts result from the use of alternate transcription initiation sites. CCNB1 contributes to the switch-like all or none behavior of the cell in deciding to commit to mitosis. Its activation is well-regulated, and positive feedback loops ensure that once the [a href=../search_result.php?search_txt=cyclin b1>Cyclin B1-< a href=../search_result.php?search_txt=cdk1>Cdk1 complex is activated, it is not deactivated.](</a)

Gene ID: 891

Pathways: [Cell Division Cycle](#), [AMPK Signaling](#), [Mitotic G1-G1/S Phases](#), [M Phase](#)

Application Details

Application Notes: The stated application concentrations are suggested starting amounts. Titration of the Cyclin B1 antibody may be required due to differences in protocols and secondary/substrate sensitivity.\. Western blot: 0.5-1 µg/mL,FACS: 1-3 µg/10^6 cells

Restrictions: For Research Use only

Handling

Buffer: 0.5 mg/mL if reconstituted with 0.2 mL sterile DI water

Storage: -20 °C

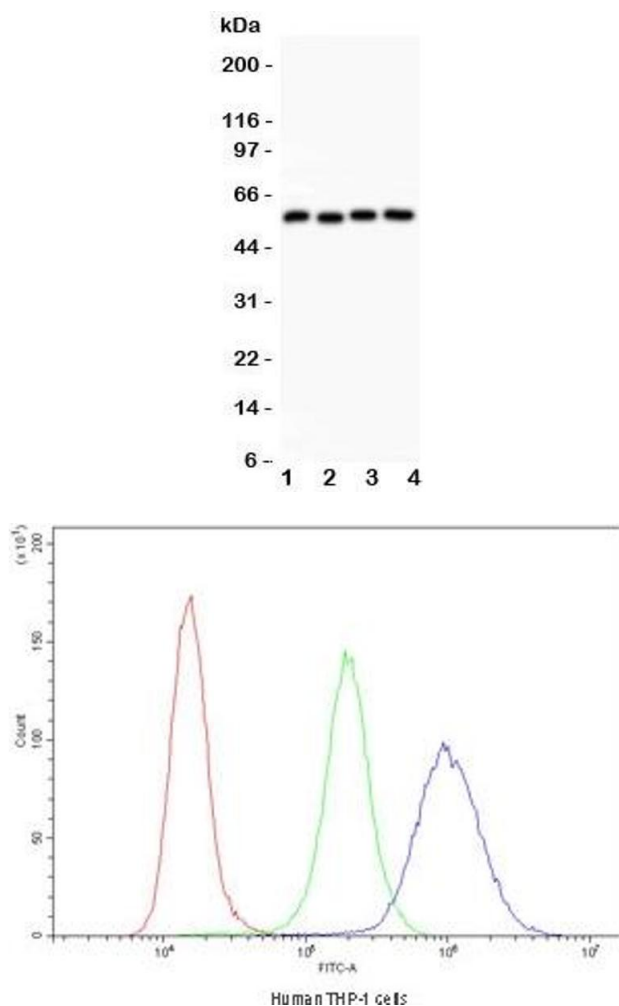
Storage Comment: After reconstitution, the Cyclin B1 antibody can be stored for up to one month at 4°C. For long-term, aliquot and store at -20°C. Avoid repeated freezing and thawing.

Images



Western Blotting

Image 1. Western blot testing of Cyclin B1 antibody and recombinant human protein (0.5ng)



Western Blotting

Image 2. Western blot testing of Cyclin B1 antibody and Lane 1: HeLa; 2: 293T; 3: MCF-7; 4: COLO320 lysate. Predicted molecular weight: 48-60 kDa

Flow Cytometry

Image 3. Flow cytometry testing of human THP-1 cells with Cyclin B1 antibody at 1ug/10⁶ cells (blocked with goat sera)

Please check the [product details page](#) for more images. Overall 4 images are available for ABIN3030583.