

Datasheet for ABIN3030598

anti-Cyclin D3 antibody (AA 252-281)**3** Images[Go to Product page](#)

Overview

Quantity:	0.4 mL
Target:	Cyclin D3 (CCND3)
Binding Specificity:	AA 252-281
Reactivity:	Human, Mouse
Host:	Rabbit
Clonality:	Polyclonal
Conjugate:	This Cyclin D3 antibody is un-conjugated
Application:	Western Blotting (WB), ELISA

Product Details

Immunogen:	A portion of amino acids 252-281 from the human protein was used as the immunogen for this CCND3 antibody.
Isotype:	Ig Fraction
Cross-Reactivity (Details):	Expected species reactivity: Bovine
Purification:	Antigen affinity purified

Target Details

Target:	Cyclin D3 (CCND3)
Abstract:	CCND3 Products
Background:	Regulatory component of the cyclin D3-CDK4 (DC) complex that phosphorylates and inhibits

Target Details

members of the retinoblastoma (RB) protein family including RB1 and regulates the cell-cycle during G(1)/S transition. Phosphorylation of RB1 allows dissociation of the transcription factor E2F from the RB/E2F complex and the subsequent transcription of E2F target genes which are responsible for the progression through the G(1) phase. Hypophosphorylates RB1 in early G(1) phase. Cyclin D-CDK4 complexes are major integrators of various mitogenic and antimitogenic signals. Also substrate for SMAD3, phosphorylating SMAD3 in a cell-cycle-dependent manner and repressing its transcriptional activity. Component of the ternary complex, cyclin D3/CDK4/CDKN1B, required for nuclear translocation and activity of the cyclin D-CDK4 complex.

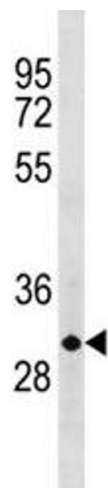
UniProt:	P30281
Pathways:	Cell Division Cycle , Mitotic G1-G1/S Phases , Glycosaminoglycan Metabolic Process

Application Details

Application Notes:	Titration of the CCND3 antibody may be required due to differences in protocols and secondary/substrate sensitivity.\. Western blot: 1:1000
Restrictions:	For Research Use only

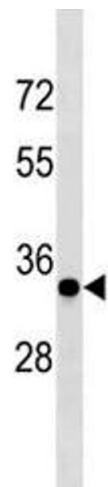
Handling

Format:	Liquid
Buffer:	In 1X PBS, pH 7.4, with 0.09 % sodium azide
Preservative:	Sodium azide
Precaution of Use:	This product contains Sodium azide: a POISONOUS AND HAZARDOUS SUBSTANCE which should be handled by trained staff only.
Storage:	-20 °C
Storage Comment:	Aliquot the CCND3 antibody and store frozen at -20°C or colder. Avoid repeated freeze-thaw cycles.



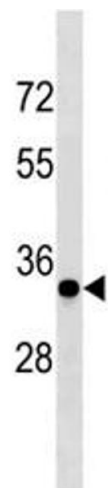
Western Blotting

Image 1. CCND3 antibody western blot analysis in MDA-MB231 lysate



Western Blotting

Image 2. CCND3 antibody western blot analysis in mouse NIH3T3 lysate



Western Blotting

Image 3. CCND3 antibody western blot analysis in mouse NIH3T3 lysate