

Datasheet for ABIN3030613  
**anti-CDK4 antibody (AA 273-305)**

## 7 Images

[Go to Product page](#)

## Overview

Quantity:	0.4 mL
Target:	CDK4
Binding Specificity:	AA 273-305
Reactivity:	Human
Host:	Rabbit
Clonality:	Polyclonal
Conjugate:	This CDK4 antibody is un-conjugated
Application:	Western Blotting (WB), ELISA, Immunohistochemistry (IHC), Immunofluorescence (IF), Flow Cytometry (FACS)

## Product Details

Immunogen:	A portion of amino acids 273-305 from the human protein was used as the immunogen for this CDK4 antibody.
Isotype:	Ig Fraction
Purification:	Purified

## Target Details

Target:	CDK4
Alternative Name:	CDK4 ( <a href="#">CDK4 Products</a> )
Background:	CDK4 is a member of the Ser/Thr protein kinase family. This protein is highly similar to the gene products of <i>S. cerevisiae</i> cdc28 and <i>S. pombe</i> cdc2. It is a catalytic subunit of the protein

## Target Details

kinase complex that is important for cell cycle G1 phase progression. The activity of this kinase is restricted to the G1-S phase, which is controlled by the regulatory subunits D-type cyclins and CDK inhibitor p16(INK4a). This kinase was shown to be responsible for the phosphorylation of retinoblastoma gene product (Rb). Mutations in this gene as well as in its related proteins including D-type cyclins, p16(INK4a) and Rb were all found to be associated with tumorigenesis of a variety of cancers. Multiple polyadenylation sites of the gene have been reported.

UniProt: [P11802](#)

Pathways: [Cell Division Cycle](#), [Mitotic G1-G1/S Phases](#), [Regulation of Cell Size](#)

## Application Details

Application Notes: Titration of the CDK4 antibody may be required due to differences in protocols and secondary/substrate sensitivity.\. Immunofluorescence: 1:10-1:50,Western blot: 1:1000,IHC (Paraffin): 1:50-1:100,Flow Cytometry: 1:10-1:50

Restrictions: For Research Use only

## Handling

Format: Liquid

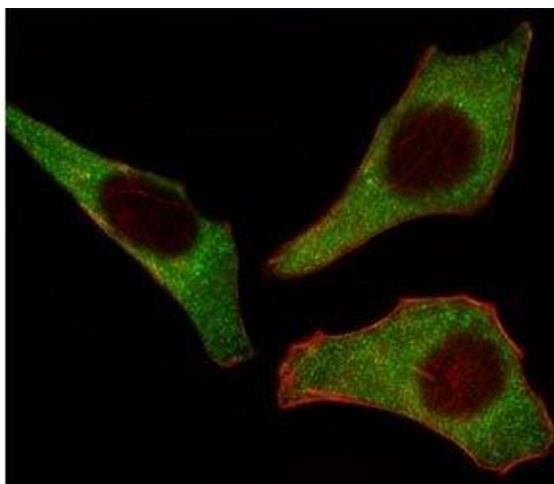
Buffer: In 1X PBS, pH 7.4, with 0.09 % sodium azide

Preservative: Sodium azide

Precaution of Use: This product contains Sodium azide: a POISONOUS AND HAZARDOUS SUBSTANCE which should be handled by trained staff only.

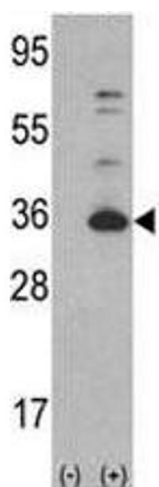
Storage: -20 °C

Storage Comment: Aliquot the CDK4 antibody and store frozen at -20°C or colder. Avoid repeated freeze-thaw cycles.



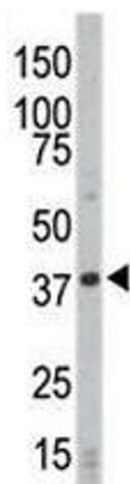
#### Immunofluorescence

**Image 1.** Fluorescent image of HeLa cells stained with CDK4 antibody at 1:25. CDK4 immunoreactivity is localized to the cytoplasm.



#### Western Blotting

**Image 2.** Western blot analysis of CDK4 antibody and 293 cell lysate (2 ug/lane) either nontransfected (Lane 1) or transiently transfected with the CDK4 gene (2).



#### Western Blotting

**Image 3.** Western blot analysis of CDK4 antibody and HL-60 cell lysate

Please check the [product details page](#) for more images. Overall 7 images are available for ABIN3030613.