

Datasheet for ABIN3030651
anti-CTH antibody (C-Term)

3 Images

[Go to Product page](#)

Overview

Quantity:	100 µg
Target:	CTH
Binding Specificity:	C-Term
Reactivity:	Human, Mouse, Rat
Host:	Rabbit
Clonality:	Polyclonal
Conjugate:	This CTH antibody is un-conjugated
Application:	Western Blotting (WB), Immunohistochemistry (Paraffin-embedded Sections) (IHC (p))

Product Details

Immunogen:	An amino acid sequence from the C-terminus of human Cystathionine gamma lyase (FYIKGTLQHAEIFLKN) was used as the immunogen for this Cystathionase antibody.
Isotype:	IgG
Purification:	Antigen affinity

Target Details

Target:	CTH
Alternative Name:	Cystathionase (Cystathionine gamma Lyase) (CTH Products)
Background:	Cystathionine gamma lyase (or Cystathionase) is an enzyme which breaks down cystathionine into cysteine and alpha-ketobutyrate. The International Radiation Hybrid Mapping Consortium mapped the CTH gene to chromosome 1. The gene had earlier been assigned to chromosome

Target Details

16 by study of somatic cell hybrids. It is demonstrated that hydrogen sulfide(H₂S) is physiologically generated by CTH.

UniProt: [P32929](#)

Pathways: [ER-Nucleus Signaling](#), [Warburg Effect](#)

Application Details

Application Notes: The stated application concentrations are suggested starting amounts. Titration of the Cystathionase antibody may be required due to differences in protocols and secondary/substrate sensitivity.\. Western blot: 0.5-1 µg/mL,IHC (Paraffin): 0.5-1 µg/mL

Restrictions: For Research Use only

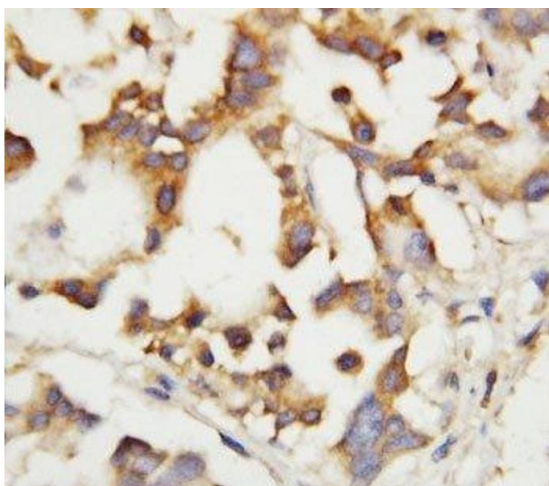
Handling

Buffer: 0.5 mg/mL if reconstituted with 0.2 mL sterile DI water

Storage: -20 °C

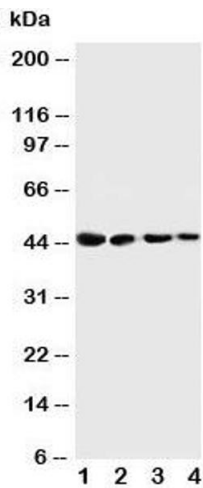
Storage Comment: After reconstitution, the Cystathionase antibody can be stored for up to one month at 4°C. For long-term, aliquot and store at -20°C. Avoid repeated freezing and thawing.

Images



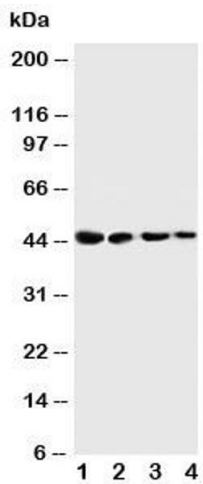
Immunohistochemistry

Image 1. IHC-P: Cystathionase antibody testing of human liver tissue



Western Blotting

Image 2. Western blot testing of Cystathionase antibody and Lane 1: SMMC-7721; 2: HT180; 3: HeLa; 4: U87 cell lysate



Western Blotting

Image 3. Western blot testing of Cystathionase antibody and Lane 1: SMMC-7721