

Datasheet for ABIN3030671  
**anti-CYP1A1 antibody (AA 252-280)**

## 5 Images

[Go to Product page](#)

## Overview

Quantity:	0.4 mL
Target:	CYP1A1
Binding Specificity:	AA 252-280
Reactivity:	Human, Mouse
Host:	Rabbit
Clonality:	Polyclonal
Conjugate:	This CYP1A1 antibody is un-conjugated
Application:	Western Blotting (WB), ELISA, Immunohistochemistry (IHC), Immunofluorescence (IF)

## Product Details

Immunogen:	A portion of amino acids 252-280 from the human protein was used as the immunogen for this CYP1A1 antibody.
Isotype:	Ig Fraction
Purification:	Purified

## Target Details

Target:	CYP1A1
Alternative Name:	CYP1A1 ( <a href="#">CYP1A1 Products</a> )
Background:	CYP1A1 is a member of the cytochrome P450 superfamily of enzymes. The cytochrome P450 proteins are monooxygenases which catalyze many reactions involved in drug metabolism and synthesis of cholesterol, steroids and other lipids. This protein localizes to the endoplasmic

## Target Details

reticulum and its expression is induced by some polycyclic aromatic hydrocarbons (PAHs), some of which are found in cigarette smoke. The enzyme's endogenous substrate is unknown, however, it is able to metabolize some PAHs to carcinogenic intermediates. CYP1A1 gene has been associated with lung cancer risk.

UniProt: [P04798](#)

Pathways: [Steroid Hormone Biosynthesis](#), [Regulation of Lipid Metabolism by PPARalpha](#)

## Application Details

Application Notes: Titration of the CYP1A1 antibody may be required due to differences in protocols and secondary/substrate sensitivity.\. Western blot: 1:1000,Immunofluorescence: 1:10-1:50,IHC (Paraffin): 1:10-1:50

Restrictions: For Research Use only

## Handling

Format: Liquid

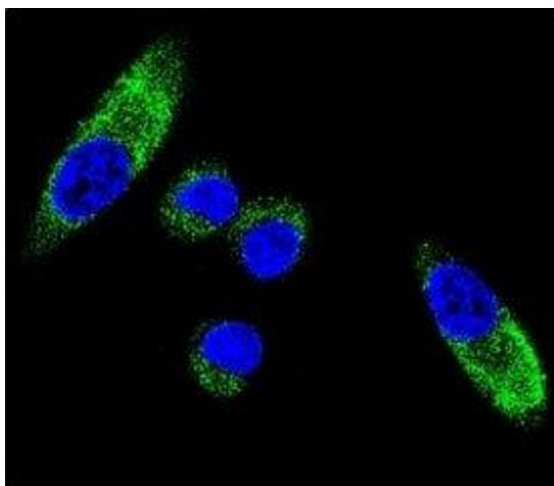
Buffer: In 1X PBS, pH 7.4, with 0.09 % sodium azide

Preservative: Sodium azide

Precaution of Use: This product contains Sodium azide: a POISONOUS AND HAZARDOUS SUBSTANCE which should be handled by trained staff only.

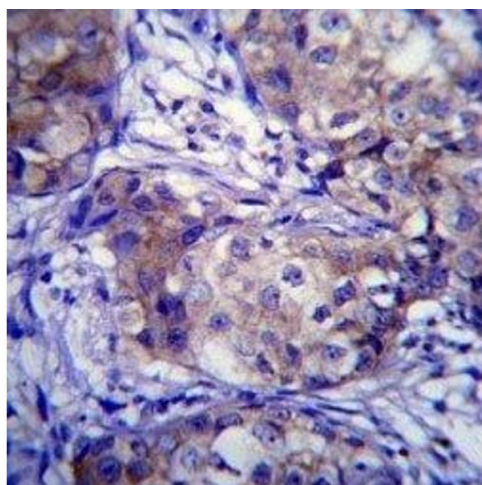
Storage: -20 °C

Storage Comment: Aliquot the CYP1A1 antibody and store frozen at -20°C or colder. Avoid repeated freeze-thaw cycles.



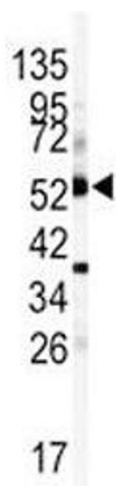
#### Immunofluorescence

**Image 1.** Confocal immunofluorescent analysis of CYP1A1 antibody with MDA-MB231 cells followed by Alexa Fluor 488-conjugated goat anti-rabbit IgG (green). DAPI was used as a nuclear counterstain (blue).



#### Immunohistochemistry

**Image 2.** CYP1A1 antibody immunohistochemistry analysis in formalin fixed and paraffin embedded human breast carcinoma.



#### Western Blotting

**Image 3.** Western blot analysis of CYP1A1 antibody and mouse lung tissue lysate

Please check the [product details page](#) for more images. Overall 5 images are available for ABIN3030671.