

Datasheet for ABIN3030672  
**anti-CYP1A2 antibody (AA 255-282)**[Go to Product page](#)

## 5 Images

## Overview

Quantity:	0.4 mL
Target:	CYP1A2
Binding Specificity:	AA 255-282
Reactivity:	Human, Mouse
Host:	Rabbit
Clonality:	Polyclonal
Conjugate:	This CYP1A2 antibody is un-conjugated
Application:	Western Blotting (WB), ELISA, Immunohistochemistry (IHC), Immunofluorescence (IF)

## Product Details

Immunogen:	A portion of amino acids 255-282 from the human protein was used as the immunogen for this CYP1A2 antibody.
Isotype:	Ig Fraction
Purification:	Antigen affinity purified

## Target Details

Target:	CYP1A2
Alternative Name:	CYP1A2 ( <a href="#">CYP1A2 Products</a> )
Background:	Cytochromes P450 are a group of heme-thiolate monooxygenases. In liver microsomes, CYP1A2 is involved in an NADPH-dependent electron transport pathway. It oxidizes a variety of structurally unrelated compounds, including steroids, fatty acids, and xenobiotics. Most active

## Target Details

in catalyzing 2-hydroxylation. Caffeine is metabolized primarily by cytochrome CYP1A2 in the liver through an initial N3-demethylation. Also acts in the metabolism of aflatoxin B1 and acetaminophen. Participates in the bioactivation of carcinogenic aromatic and heterocyclic amines. Catalyzes the N-hydroxylation of heterocyclic amines and the O-deethylation of phenacetin. [UniProt]

UniProt: [P05177](#)

## Application Details

Application Notes: Titration of the CYP1A2 antibody may be required due to differences in protocols and secondary/substrate sensitivity.\. Western blot: 1:1000,IHC (Paraffin): 1:10-1:50,Immunofluorescence: 1:10-1:50

Restrictions: For Research Use only

## Handling

Format: Liquid

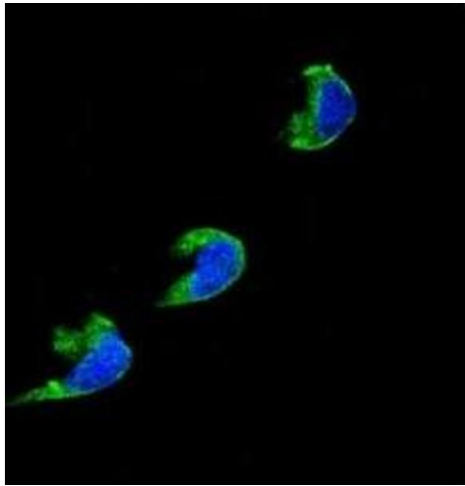
Buffer: In 1X PBS, pH 7.4, with 0.09 % sodium azide

Preservative: Sodium azide

Precaution of Use: This product contains Sodium azide: a POISONOUS AND HAZARDOUS SUBSTANCE which should be handled by trained staff only.

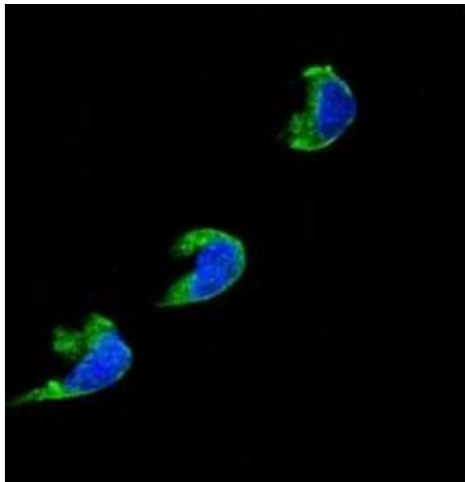
Storage: -20 °C

Storage Comment: Aliquot the CYP1A2 antibody and store frozen at -20°C or colder. Avoid repeated freeze-thaw cycles.



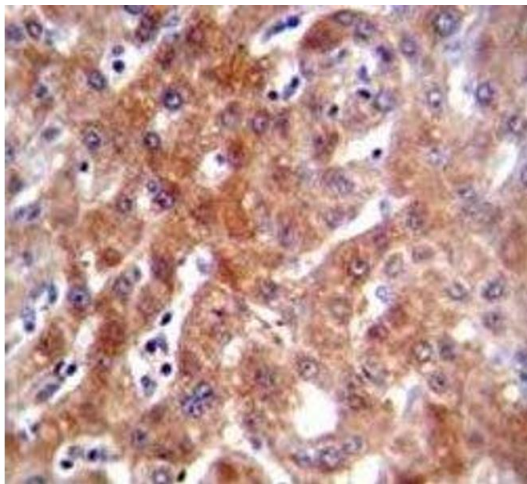
#### Immunofluorescence

**Image 1.** Confocal immunofluorescent analysis of CYP1A2 antibody with 293 cells followed by Alexa Fluor 488-conjugated goat anti-rabbit IgG (green). DAPI was used as a nuclear counterstain (blue).



#### Immunofluorescence

**Image 2.** Confocal immunofluorescent analysis of CYP1A2 antibody with 293 cells followed by Alexa Fluor 488-conjugated goat anti-rabbit IgG (green). DAPI was used as a nuclear counterstain (blue).



#### Immunohistochemistry

**Image 3.** CYP1A2 antibody immunohistochemistry analysis in formalin fixed and paraffin embedded human liver tissue.

Please check the [product details page](#) for more images. Overall 5 images are available for ABIN3030672.