

Datasheet for ABIN3030675
anti-CYP1A2 antibody (AA 255-282)



[Go to Product page](#)

2 Images

Overview

Quantity:	0.4 mL
Target:	CYP1A2
Binding Specificity:	AA 255-282
Reactivity:	Human
Host:	Mouse
Clonality:	Monoclonal
Conjugate:	This CYP1A2 antibody is un-conjugated
Application:	Western Blotting (WB), ELISA

Product Details

Immunogen:	A portion of amino acids 255-282 from the human protein was used as the immunogen for this CYP1A2 antibody.
Clone:	499CT13-2-2
Isotype:	IgG3
Purification:	Purified

Target Details

Target:	CYP1A2
Alternative Name:	CYP1A2 (CYP1A2 Products)
Background:	This gene encodes a member of the cytochrome P450 superfamily of enzymes. The

Target Details

cytochrome P450 proteins are monooxygenases which catalyze many reactions involved in drug metabolism and synthesis of cholesterol, steroids and other lipids. The protein encoded by this gene localizes to the endoplasmic reticulum and its expression is induced by some polycyclic aromatic hydrocarbons (PAHs), some of which are found in cigarette smoke. The enzyme's endogenous substrate is unknown, however, it is able to metabolize some PAHs to carcinogenic intermediates. Other xenobiotic substrates for this enzyme include caffeine, aflatoxin B1, and acetaminophen. The transcript from this gene contains four Alu sequences flanked by direct repeats in the 3' untranslated region.

UniProt: [P05177](#)

Application Details

Application Notes: Titration of the CYP1A2 antibody may be required due to differences in protocols and secondary/substrate sensitivity.\. Western blot: 1:100-1:250

Restrictions: For Research Use only

Handling

Format: Liquid

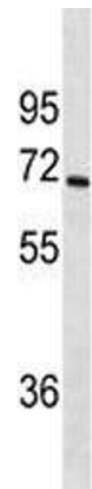
Buffer: In 1X PBS, pH 7.4, with 0.09 % sodium azide

Preservative: Sodium azide

Precaution of Use: This product contains Sodium azide: a POISONOUS AND HAZARDOUS SUBSTANCE which should be handled by trained staff only.

Storage: -20 °C

Storage Comment: Aliquot the CYP1A2 antibody and store frozen at -20°C or colder. Avoid repeated freeze-thaw cycles.



Western Blotting

Image 1. CYP1A2 antibody western blot analysis in SK-BR-3 lysate. Predicted molecular weight ~58 kDa.



Western Blotting

Image 2. CYP1A2 antibody western blot analysis in SK-BR-3 lysate. Predicted molecular weight ~58 kDa.