

Datasheet for ABIN3030687
anti-CYP2E1 antibody (AA 402-429)

5 Images

[Go to Product page](#)

Overview

| | |
|----------------------|---|
| Quantity: | 0.4 mL |
| Target: | CYP2E1 |
| Binding Specificity: | AA 402-429 |
| Reactivity: | Human |
| Host: | Rabbit |
| Clonality: | Polyclonal |
| Conjugate: | This CYP2E1 antibody is un-conjugated |
| Application: | Western Blotting (WB), Immunohistochemistry (IHC), ELISA, Flow Cytometry (FACS) |

Product Details

| | |
|---------------|---|
| Immunogen: | A portion of amino acids 402-429 from the human protein was used as the immunogen for this CYP2E1 antibody. |
| Isotype: | Ig Fraction |
| Purification: | Purified |

Target Details

| | |
|-------------------|--|
| Target: | CYP2E1 |
| Alternative Name: | CYP2E1 (CYP2E1 Products) |
| Background: | CYP2E1 is a member of the cytochrome P450 superfamily of enzymes. The cytochrome P450 proteins are monooxygenases which catalyze many reactions involved in drug metabolism and synthesis of cholesterol, steroids and other lipids. This protein localizes to the endoplasmic |

Target Details

reticulum and is induced by ethanol, the diabetic state, and starvation. The enzyme metabolizes both endogenous substrates, such as ethanol, acetone, and acetal, as well as exogenous substrates including benzene, carbon tetrachloride, ethylene glycol, and nitrosamines which are premutagens found in cigarette smoke. Due to its many substrates, this enzyme may be involved in such varied processes as gluconeogenesis, hepatic cirrhosis, diabetes, and cancer.

UniProt: [P05181](#)

Application Details

Application Notes: Titration of the CYP2E1 antibody may be required due to differences in protocols and secondary/substrate sensitivity.\. Western blot: 1:1000,IHC (Paraffin): 1:50-1:100,Flow Cytometry: 1:10-1:50

Restrictions: For Research Use only

Handling

Format: Liquid

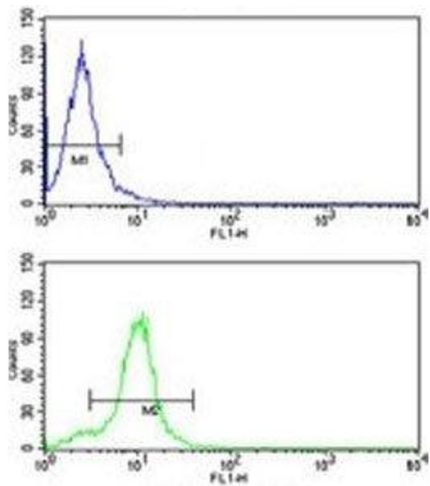
Buffer: In 1X PBS, pH 7.4, with 0.09 % sodium azide

Preservative: Sodium azide

Precaution of Use: This product contains Sodium azide: a POISONOUS AND HAZARDOUS SUBSTANCE which should be handled by trained staff only.

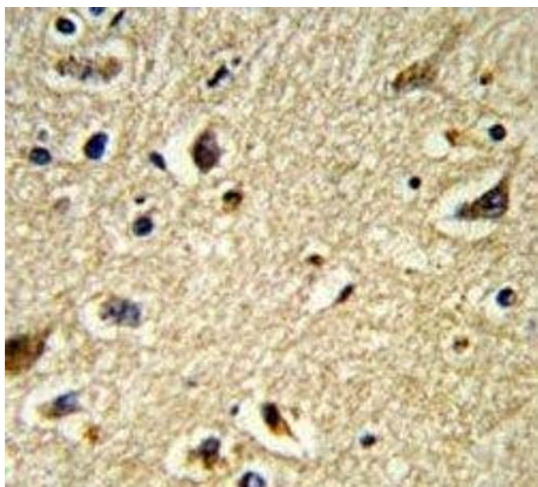
Storage: -20 °C

Storage Comment: Aliquot the CYP2E1 antibody and store frozen at -20°C or colder. Avoid repeated freeze-thaw cycles.



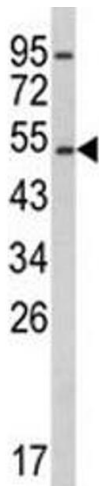
Flow Cytometry

Image 1. CYP2E1 antibody flow cytometry analysis of HepG2 cells (green) compared to a negative control (blue). FITC-conjugated goat-anti-rabbit secondary Ab was used for the analysis.



Immunohistochemistry

Image 2. IHC analysis of FFPE human brain tissue stained with CYP2E1 antibody



Western Blotting

Image 3. Western blot analysis of CYP2E1 antibody and K562 lysate.

Please check the [product details page](#) for more images. Overall 5 images are available for ABIN3030687.